

Issue Date 05/11/2020

1. **Met Mast De-cluttering and Decommissioning**

Please be advised that Moray Offshore Windfarm (East) Limited (Moray East) will be carrying out Decommissioning and removal of the met mast steel lattice tower and subsea cut of the monopile circa 15/11/2020 for approximately 14 days not inclusive of weather downtime.

Personnel and equipment for these works will be based initially on the JUV GMS Endeavour (Figure 1) for decluttering, once the tower structure is demobilised the transition piece and lower section of the monopile will be removed by the Salina (Figure 2). The Selina will be assisted by KML Sarah Grey and KML Severn Sea (Figure 3 & Figure 4). Windcat 6 (Figure 6) will be used for safety purposes providing over the side cover whilst the lattice tower is disassembled by rope access teams.

On completion of the works there will be an underwater obstruction to navigation comprising the concrete caisson and lower section of the monopile. A special mark buoy will be deployed to mark the obstruction and a further NTM will be issued once the buoy is installed with its position.

The location of the Met Mast where the decommissioning works will take place is depicted in Figure 8.

8460001-PC0010-MWE-NTM-045


Figure1. GMS Endeavour

GMS Endeavour	
General Description and Dimensions:	LOA: 84.1m, Beam: 36m, Draught 5.9m
Call Sign:	3EUG6
MMSI:	370582000
On Board Contact:	Master
Offshore Manager / Party Chief:	N/A
E-mail:	endeavour.6102@fleet.gmsuae.com
Onshore Representative:	Carl Galfskiy



8460001-PC0010-MWE-NTM-045

Figure 2. Selina

General Description and Dimensions:	Flat top barge
Call Sign:	SFNC
IMO/MMSI	None. As it is not navigable.
On Board Contact:	Master
Offshore Manager / Party Chief:	N/A
E-mail:	selina@keynvormorlift.co.uk
Onshore Representative:	Carl Galfskiy
	

8460001-PC0010-MWE-NTM-045

Figure 3. Severn Sea

General Description and Dimensions:	Multi purpose installation vessel
Call Sign:	2DCG5
IMO/MMSI:	8652043/235077754
On Board Contact:	Master
Offshore Manager / Party Chief:	N/A
E-mail:	severnsea@keynvormorlift.co.uk
Onshore Representative:	Carl Galfskiy



8460001-PC0010-MWE-NTM-045

Figure 4. Sarah Grey

General Description and Dimensions:	Multi cat
Call Sign:	ZQQ5
IMO/MMSI	8956437 / 235000357
On Board Contact:	Master
Offshore Manager / Party Chief:	N/A
E-mail:	sarahgrey@keynvormorlift.co.uk
Onshore Representative:	Carl Galfskiy



8460001-PC0010-MWE-NTM-045

Figure 5. Venture

General Description and Dimensions:	Handling Tug
Call Sign:	2HUC5
IMO/MMSI	7529469/235106674
On Board Contact:	Master
Offshore Manager / Party Chief:	N/A
E-mail:	Venture@keynvormorlift.co.uk
Onshore Representative:	Carl Galfskiy



8460001-PC0010-MWE-NTM-045

Figure 6. Windcat 6.

Windcat 6	
General Description and Dimensions:	CTV LOA: 16 m, Beam: 6 m, Draught 1.9m
Call Sign:	MXFD
MMSI:	23057789
On Board Contact:	Master
Offshore Manager / Party Chief:	N/A
E-mail:	Windcat6@windcatworkboats.com
Onshore Representative:	Carl Galfskiy

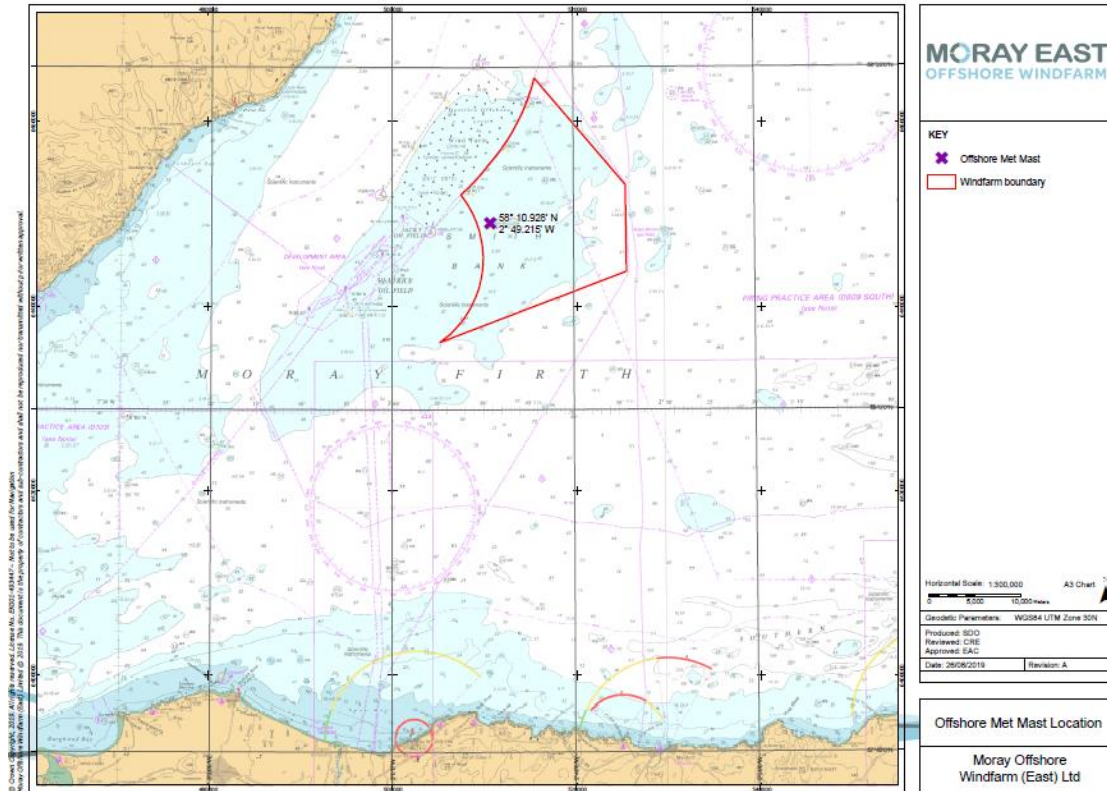


Figure 7. Photograph of the Meteorological Mast

8460001-PC0010-MWE-NTM-045



Figure 8 – Meteorological Mast location map



Name	Latitude (DMS)	Longitude (DMS)	Latitude (DM)	Longitude (DM)
Met Mast	58° 10' 55.680" N	2° 49' 12.892" W	58° 10.928' N	2° 49.215' W

Table 1 – Met mast coordinates

2. General Safety Advice

Users should consider the contents of this NtM when passage planning under the associated requirements of SOLAS V Regulation 34 and continue to comply with COLREGS at all times as a priority. Further guidance to mariners transiting in the vicinity of UK wind farms is provided in MCA Marine Guidance Note 372.

Mariners are requested to navigate with caution, to use all means appropriate to aid safe navigation as defined under COLREGs Rule 7, and keep continued watch on VHF Ch. 16, 87 and 73 when navigating the area.

3. Contact Details

CONTACT DETAILS	
Marine Coordination Centre 24/7 Gary Smailes – Lead Marine Coordinator Email: garysmailes.morayeast@morayeast.com Tel : +44 7918750025/01346 511838	For fisheries related matters Alex Winrow-Giffin – Brown and May Marine Ltd. Email: alex@brownmay.com Tel : +44 1379 872144/ +44 7760 160039

8460001-PC0010-MWE-NTM-045