

NOTICE TO MARINERS

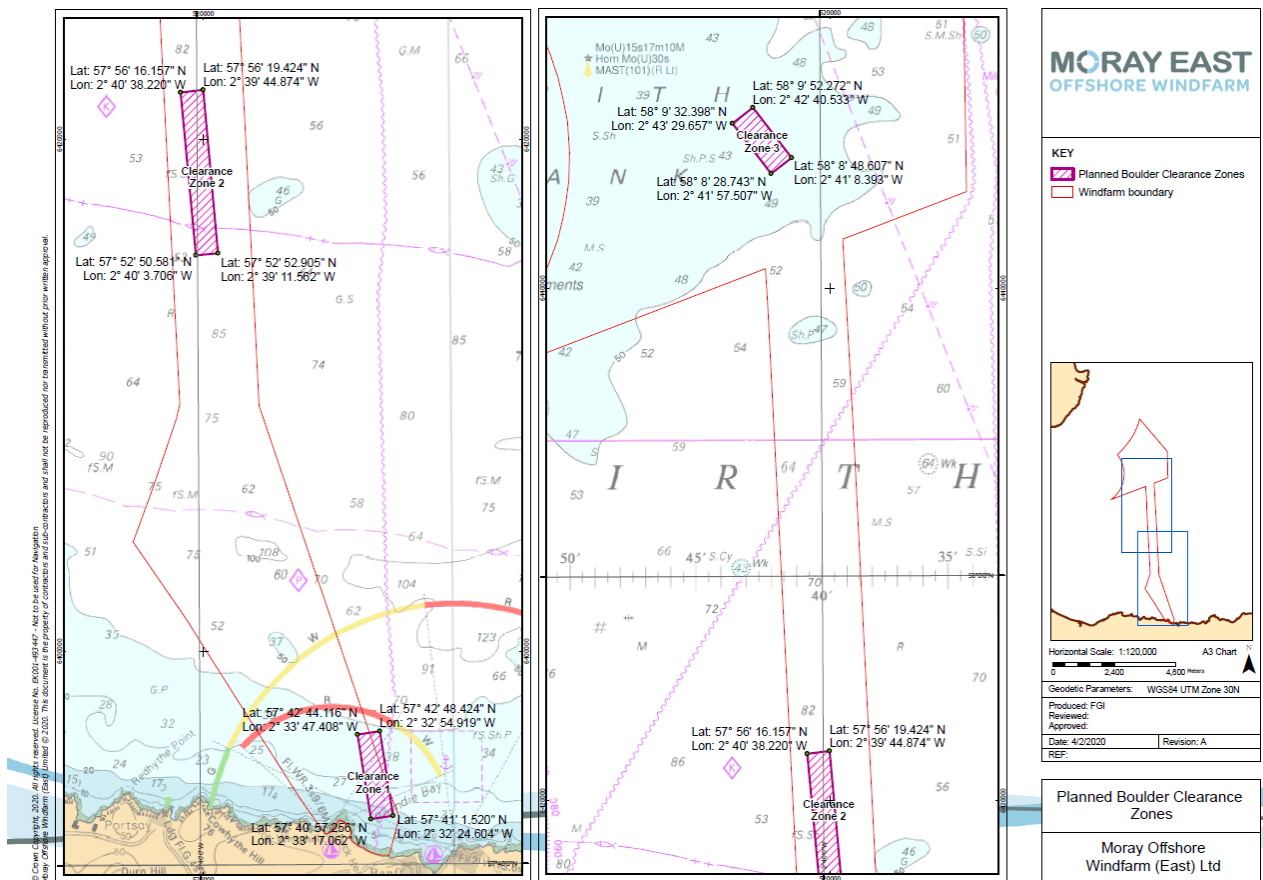
Issue date: 06/04/2020

1. Boulder Clearance Operations.

Please be advised that Moray Offshore Windfarm (East) Limited (Moray East) are planning to commence boulder clearance operations in preparation for forthcoming cable lay and trenching work scopes on the Offshore Export Cable (OEC) routes circa 23rd of April 2020 with a duration of circa 30 days.

The work will comprise boulder clearance operations using the OISL RP15 boulder clearance system (Figure 2) towed from the AHTS Havila Venus to create a 20m wide lay corridor in areas where boulder accumulations exist on the seabed followed by pre and post lay surveys conducted by the ROV.

Figure 1. Boulder Clearance Areas



Clearance Area	Latitude DDM UTM30N	Longitude DDM UTM30N	Latitude DMS UTM30N	Longitude DMS UTM30N
Clearance Area 1	57° 42.735' N	2° 33.790' W	57° 42' 44.116" N	2° 33' 47.408" W
	57° 42.807' N	2° 32.915' W	57° 42' 48.424" N	2° 32' 54.919" W
	57° 41.025' N	2° 32.410' W	57° 41' 1.520" N	2° 32' 24.604" W
	57° 40.954' N	2° 33.284' W	57° 40' 57.256" N	2° 33' 17.062" W
Clearance Area 2	57° 56.269' N	2° 40.637' W	57° 56' 16.157" N	2° 40' 38.220" W
	57° 52.843' N	2° 40.062' W	57° 52' 50.581" N	2° 40' 3.706" W
	57° 52.882' N	2° 39.193' W	57° 52' 52.905" N	2° 39' 11.562" W
	57° 56.324' N	2° 39.748' W	57° 56' 19.424" N	2° 39' 44.874" W
Clearance Area 3	58° 9.540' N	2° 43.494' W	58° 9' 32.398" N	2° 43' 29.657" W
	58° 8.479' N	2° 41.958' W	58° 8' 28.743" N	2° 41' 57.507" W
	58° 8.810' N	2° 41.140' W	58° 8' 48.607" N	2° 41' 8.393" W
	58° 9.871' N	2° 42.676' W	58° 9' 52.272" N	2° 42' 40.533" W

Table 1. Coordinates for Boulder clearance bounded boxes.

Figure 2. Description of Plough

The 15m Route Preparation Plough is designed to clear debris or obstructions such as boulders from the proposed route corridor in order to allow cable lay and burial operations to proceed with minimal risk.

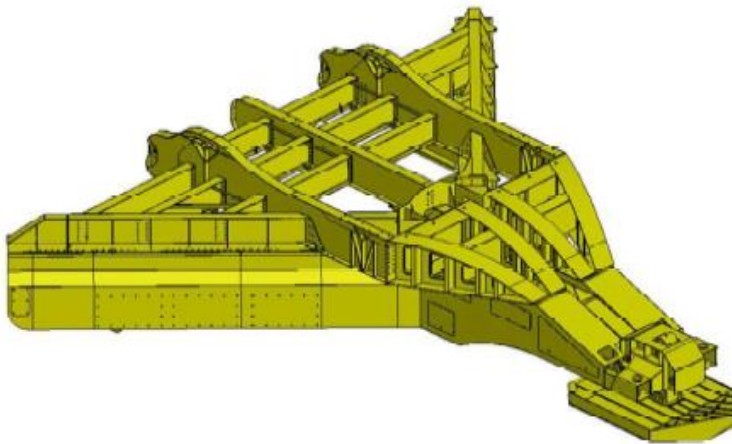


Figure 8: 15m Route Preparation Plough

Item	Value
Width	15.8m
Length	16.1m
Height	3.8m
Mass in air	85,000kg
Submerged Mass	74,000kg

2. Boulder clearance vessel

Havila Venus	
General Description and Dimensions:	Offshore Heavy Lift DP2 jack up vessel LOA: 92 m, Beam: 22 m, Draught: 7.1 m
Call Sign:	LAZC
MMSI:	259305000
On Board Contact:	Mob: +47 23675864
Offshore Manager / Party Chief:	Vessel Master
E-mail:	Bridge.venus@havilaship.com
Onshore Representative:	Andy Small



3. General Safety Advice

Please be aware that by virtue of its mode of operation the Havila Venus will be Restricted in her Ability to Manoeuvre (RAM) as defined under COLREGs (International Regulations for Preventing Collisions at Sea 1972, Rule 3). Masters of vessels are therefore requested to maintain their vessels and gears at a minimum safe distance from the vessel of **500 metres** when it is undertaking work and showing the appropriate shapes and lights in accordance with COLREGs Rule 18.

Further updates, final Buoy position and Weekly notice of operations can be accessed in the Moray East Website

<http://www.morayoffshore.com/moray-east/the-project/notices-to-mariners/>

4. Contact details

CONTACT DETAILS	
Marine Coordination Centre 24/7 Gary Smailes – Lead Marine Coordinator Email: garysmailes.morayeast@morayeast.com Tel : +44 7918750025/01346 511838	For fisheries related matters Alex Winrow-Giffin – Brown and May Marine Ltd. Email: alex@brownmay.com Tel : +44 1379 872148 / +44 7760 160039