

NOTICE TO MARINERS

Issue date: 22/08/2019

1. Towage of the HDD Duct from Cromarty Firth to Inverboynie

Please be advised that Moray Offshore Windfarm (East) Limited (Moray East) will commence a tow back of the HDD pipe from Cromarty to Inverboynie on the 3rd of September 2019.

2. ACTIVITY 1 - Transit route for HDPE pipe tow Cromarty Firth to Inverboynie

The HDPE pipe will be towed from Cromarty to Inverboynie following the transit route shown in Figure 1 below. The route coordinates are provided in Table 1. The vessels engaged in the towing of the pipes are identified below.

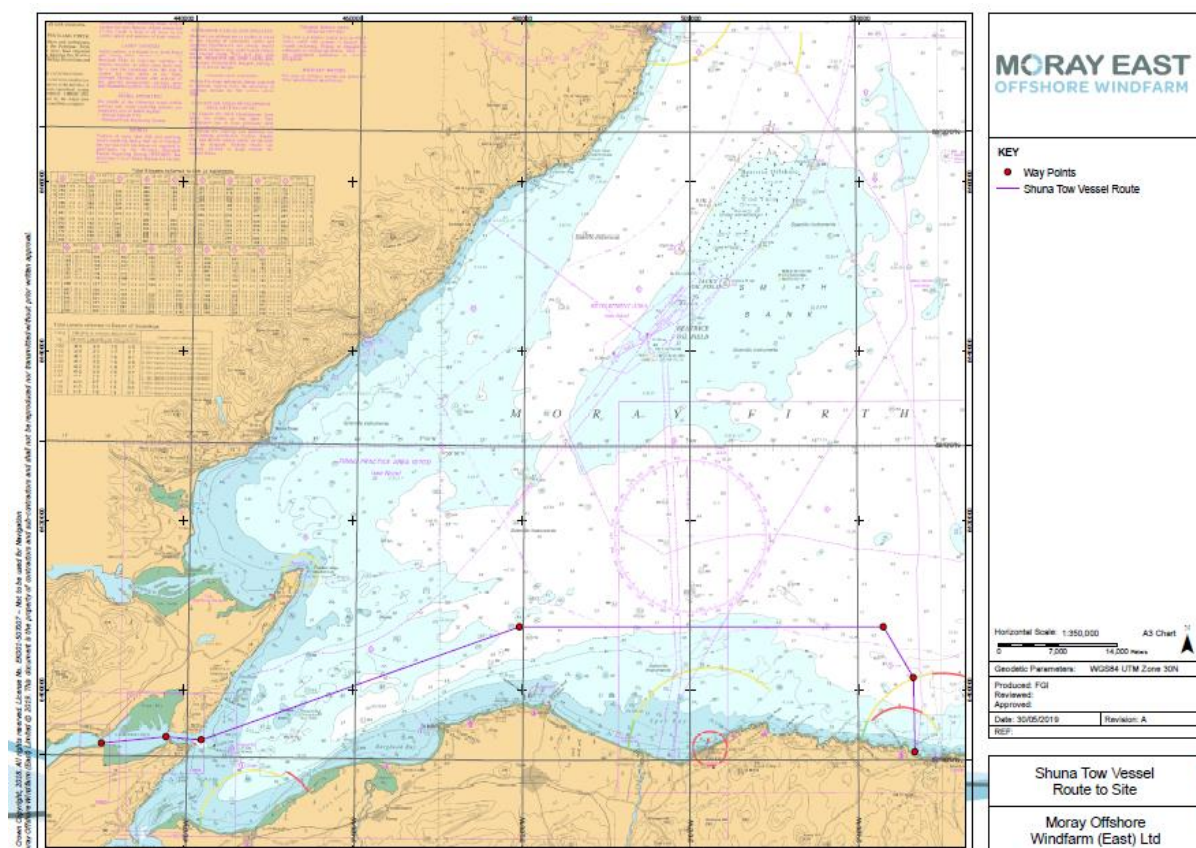


Figure 1 - Transit route/waypoints for the planned tow

8460001-PC0010-MWE-NTM-008

Table 1 – Transit route waypoints

Way Point	Lat	Lon	Dist to Next	Total	Remarks
1	57° 40.810' N	004° 10.160' W	4.24NM	00.00 NM	Wet stow location
2	57° 41.280' N	004° 02.480' W	2.26 NM	04.24 NM	
3	57° 41.110' N	003° 58.270' W	20.77 NM	06.50 NM	
4	57° 48.500' N	003° 20.450' W	21.64 NM	27.27 NM	
5	57° 48.500' N	002° 36.950' W	23.93NM	48.91 NM	
6	57° 45.250' N	002° 33.410' W	04.77NM	72.83NM	
7	57° 40.530' N	002° 33.280' W		77.66NM	Boyndie Bay

Shuna	
General Description and Dimensions:	Towing vessel
Call Sign:	VQBP3
MMSI:	235007528
On Board Contact:	Ian Beaton 07713064672
Offshore Manager / Party Chief:	Vessel Master
E-mail:	admin@seafastltd.co.uk
Onshore Representative:	Gareth Ellis Gareth.ellis@morayeast.com



8460001-PC0010-MWE-NTM-008

Rhona	
General Description and Dimensions:	Guard Vessel during tow
Call Sign:	VQBP3
MMSI:	235007528
On Board Contact:	Ian Beaton 07713064672
Offshore Manager / Party Chief:	Offshore manager
E-mail:	admin@seafastltd.co.uk
Onshore Representative:	Gareth Ellis Gareth.ellis@morayeast.com



MORAY EAST OFFSHORE WINDFARM

8460001-PC0010-MWE-NTM-008

Teal Of Wick	
General Description and Dimensions:	Tail end vessel
Call Sign:	ZQXM9
MMSI:	235000773
On Board Contact:	Ian Beaton 07713064672
Offshore Manager / Party Chief:	Offshore Manager
E-mail:	admin@seafastltd.co.uk
Onshore Representative:	Gareth Ellis Gareth.ellis@morayeast.com



3. General Safety Advice

Please be aware that by virtue of their modes of operation, the Shuna and Teal of Wick will be Restricted in their Ability to Manoeuvre (RAM) as defined under COLREGs (International Regulations for Preventing Collisions at Sea 1972, Rule 3). Masters of vessels are therefore requested to maintain their vessels and gears at a minimum safe distance from these vessels of 500 metres when it is undertaking work and showing the appropriate shapes and lights in accordance with COLREGs Rule 18.

4. Contact details

<u>CONTACT DETAILS</u>		
Marine Coordination Centre 24/7 Gary Smiles – Lead Marine Coordinator Email: garysmiles.morayeast@morayeast.com Tel : +44 7918750025/+44 1346 511838	For fisheries related matters Jen Miller – Brown and May Marine Ltd. Email: jen.miller@brownmay.com Tel : +44 1379 872148/ +44 7519 106002	Shefa related matters Brian Rosendahl Account manager Shefa Ltd Email : brr@ft.to Tel : +298 303602/+298 243602