

NOTICE TO MARINERS

Issue date: 19/07/2019

1. Towage of the HDD Duct from Inverboyndie to Cromarty Firth

Please be advised that Moray Offshore Windfarm (East) Limited (Moray East) will commence a tow back of the HDD pipe from Inverboyndie to Cromarty firth on the 19th of July 2019.

2. ACTIVITY 1 - Transit route for HDPE pipe tow Inverboyndie Bay to Cromarty Firth

The HDPE pipe will be towed from Inverboyndie Bay to Cromarty following the transit route shown in Figure 2 below. The route coordinates are provided in Table 2. The vessels engaged in the towing of the pipes are identified below.

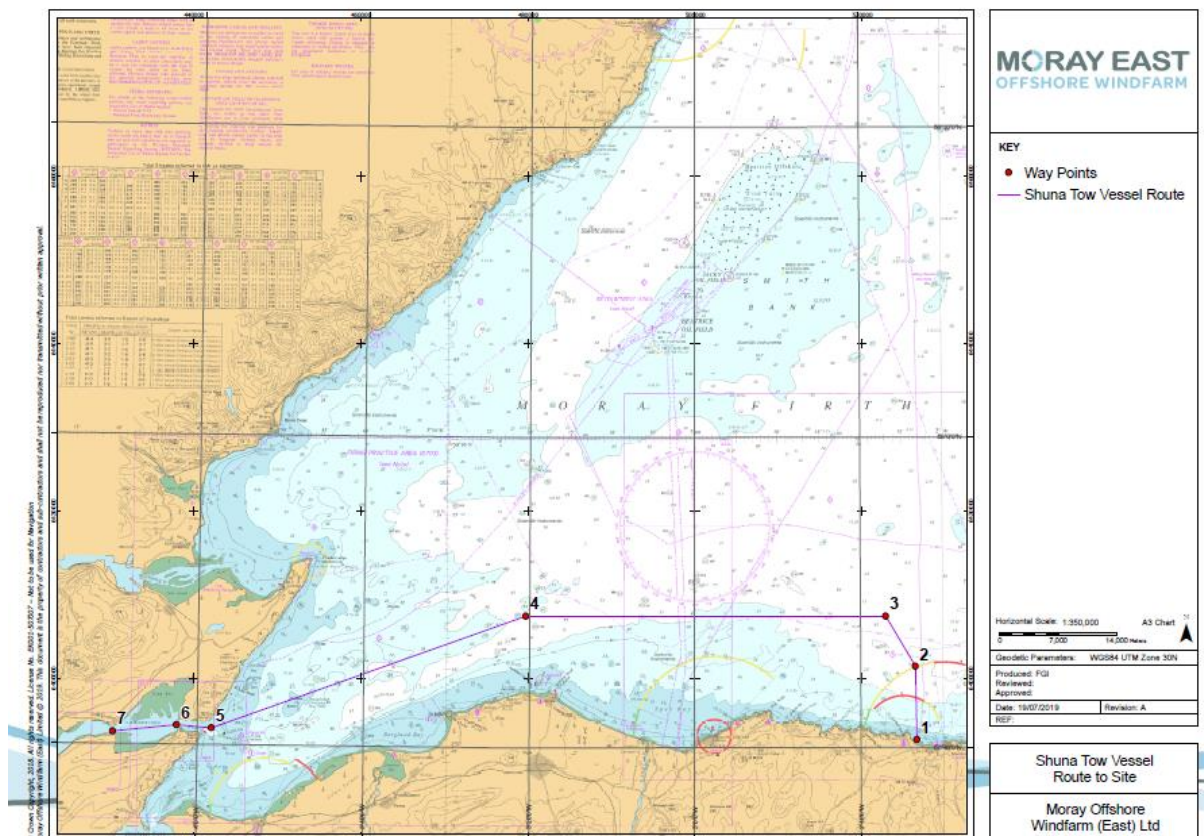


Figure 2 - Transit route/waypoints for the planned tow

8460001-PC0010-MWE-NTM-005

Table 2 – Transit route waypoints

Waypoint	Lat	Lon	Distance to Next	Total	Remarks
1	57° 40.530 N	002° 33.28 0W	4.73 NM	00.00 NM	Boyndie Bay
2	57° 45.250 N	002° 33.410 W	3.76 NM	04.73 NM	
3	57° 48.500 N	002° 36.950 W	23.25 NM	8.49 NM	
4	57° 48.500 N	003° 20.450 W	21.56 NM	31.74 NM	
5	57° 41.110 N	003° 58.270 W	2.26 NM	53.3 NM	
6	57° 41.280 N	004° 02.480 W	4.15 NM	55.56 NM	
7	57° 40.810 N	004° 10.160 W		59.71 NM	Wet stow location

Shuna	
General Description and Dimensions:	Towing vessel
Call Sign:	VQBP3
MMSI:	235007528
On Board Contact:	Ian Beaton 07713064672
Offshore Manager / Party Chief:	Vessel Master
E-mail:	admin@seafastltd.co.uk
Onshore Representative:	Gareth Ellis Gareth.ellis@morayeast.com



8460001-PC0010-MWE-NTM-005

Rhona	
General Description and Dimensions:	Guard Vessel during tow
Call Sign:	VQBP3
MMSI:	235007528
On Board Contact:	Ian Beaton 07713064672
Offshore Manager / Party Chief:	Offshore manager
E-mail:	admin@seafastltd.co.uk
Onshore Representative:	Gareth Ellis Gareth.ellis@morayeast.com



MORAY EAST OFFSHORE WINDFARM

8460001-PC0010-MWE-NTM-005

Teal Of Wick	
General Description and Dimensions:	Tail end vessel
Call Sign:	ZQXM9
MMSI:	235000773
On Board Contact:	Ian Beaton 07713064672
Offshore Manager / Party Chief:	Offshore Manager
E-mail:	admin@seafastltd.co.uk
Onshore Representative:	Gareth Ellis Gareth.ellis@morayeast.com



3. General Safety Advice

Please be aware that by virtue of their modes of operation, the Shuna and Teal of Wick will be Restricted in their Ability to Manoeuvre (RAM) as defined under COLREGs (International Regulations for Preventing Collisions at Sea 1972, Rule 3). Masters of vessels are therefore requested to maintain their vessels and gears at a minimum safe distance from these vessels of **500 metres** when it is undertaking work and showing the appropriate shapes and lights in accordance with COLREGs Rule 18.

4. Contact details

CONTACT DETAILS		
Marine Coordination Centre 24/7 Gary Smailes – Lead Marine Coordinator Email: garysmailes.morayeast@morayeast.com Tel : +44 7918750025/01346 511838	For fisheries related matters Jen Miller – Brown and May Marine Ltd. Email: jen.miller@brownmay.com Tel : +44 1379 872148/ +44 7519 106002	Shefa related matters Brian Rosendahl Account manager Shefa Ltd Email : brr@ft.to Tel : +298 303602/+298 243602