

## NOTICE TO MARINERS

Issue date: 26/07/2024

### 1. Moray East Met Mast Special Mark light repair - UPDATED

Please be advised that Moray Offshore Windfarm (East) Limited (Moray East) will undergo repairs to reinstate the light at the special mark buoy around the remaining subsea structure at the meteorological mast (Met Mast) (See Figure 1 & Table 1. Due to weather and other restrictions, the works have been delayed and Moray East anticipates the works to start on the 1<sup>st</sup> of August 2024. Moray East anticipates the works to be completed by the 5<sup>th</sup> of August 2024.

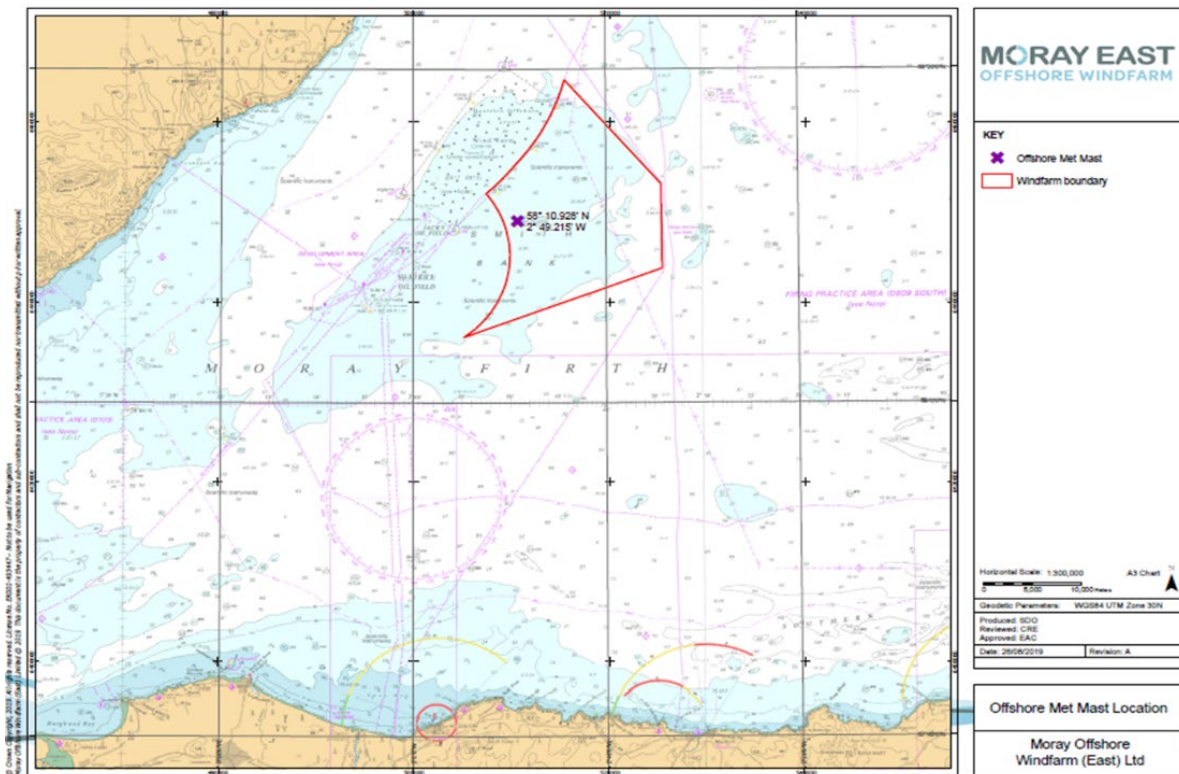


Figure 1 Moray East Site and Met Mast Location

Table 1 Met Mast Special Mark buoy location

Name	Coordinates (WGS84)	
	Latitude (dms)	Longitude (dms)
Met Mast Special Mark Buoy	58°10'33.360" N	2°49'07.619" W

The works to repair the Met Mast Special Marker Buoy light will be carried out by the Barnston.

Cameron	
Operator:	Briggs Marine
IMO:	9967938
Call Sign:	MLZU5
MMSI:	232043206
On Board Contact:	Email: Barnston@carmet.co.uk Phone: + 44 (0)7833130418
Onshore Representative:	Jules Jauffret <a href="mailto:jules.jauffret@oceanwinds.com">jules.jauffret@oceanwinds.com</a> Phone: +44 (0)7901080802



## 2. General Safety advice

Please be aware that while navigating the area to keep an extra look out for the unlit Met Mast Special marker buoy during the hours of darkness and reduced visibility, until such a time as the buoy is repaired. Please also note that the Met Mast is currently marked by a virtual AtoN.

Please be aware that, during the repair activities, by virtue of its mode of operation the vessel will be Restricted in her Ability to Manoeuvre (RAM) as defined under COLREGs (International Regulations for Preventing Collisions at Sea 1972, Rule 3). Masters of vessels are therefore requested to maintain their vessels and gears at a minimum safe passing distance from the vessel of 500 metres when it is undertaking work and showing the appropriate shapes and lights in accordance with COLREGs Rule 27. In order to not compromise the safety of the Vessel, their crew, and their ability to undertake its contracted works, fishermen who have static fishing gears deployed within 500 m from the Met Mast location (see Table 1 and Figure 1) are requested to provide the coordinates of such deployed gears

in DMS and details of whether the surface markers used are visible at all states of visibility to Alex Winrow-Griffin (Brown & May Marine) using the contact information below (Section 58 of the Merchant Shipping Act 1995). Fishermen who have static gears deployed beyond 12 nm are reminded that static gear must be marked in accordance with Commission Implementing Regulation (EU) No. 404/2011

<https://www.gov.uk/guidance/markings-of-fishing-gear-retrieval-and-notification-of-lostgear#marking-of-fishing-gear>.

### 3. Contact details

The following contact can provide more information if required. Please note that specific queries can also be addressed to the relevant vessel or shore-based representative.

Contact details	
<b>Marine Coordination Centre 24/7</b> Email <a href="mailto:mcc@morayeast.com">mcc@morayeast.com</a> Tel : +44 07884630427	<b>For fisheries related matters</b> Alex Winrow-Giffin – Brown and May Marine Ltd.Email: <a href="mailto:alex@brownmay.com">alex@brownmay.com</a> Tel : +44 1379 872148 / +44 7760 160039