

# UNIVERSITY OF ABERDEEN

## NOTICE TO MARINERS

No. UoA/07/2022

### MORAY FIRTH, SCOTLAND

Date of notice: 8<sup>th</sup> August 2022

For information and enquiries please contact:

**Robert Bashford**

Lighthouse Field Station,  
University of Aberdeen,  
George St.,  
Cromarty,  
IV11 8YL

**+44 (0)1381 600548**

**[robert.bashford@abdn.ac.uk](mailto:robert.bashford@abdn.ac.uk)**

With reference to notice UoA/05/2022, mariners are advised that between 27<sup>th</sup> and 29<sup>th</sup> July 2022, the University of Aberdeen completed the installation of the **56 moorings and equipment** within the Beatrice and Moray East Offshore Windfarm areas, at the locations listed in Table 1 of the current notice and illustrated in Figure 1. The moorings support acoustic loggers that record echolocation clicks of dolphins and porpoises (see Figure S 2) and will remain in place for approximately **6-8 weeks**. All are subsurface moorings that extend no more than 3 m vertically from the seabed (see Figure S 1). The moorings are not surface marked.

Moorings and equipment recovery is expected to be between 1<sup>st</sup> and 16<sup>th</sup> September 2022, subject to weather. Further information regarding the recovery of these moorings and equipment will be informed in a separate Notice to Mariners.

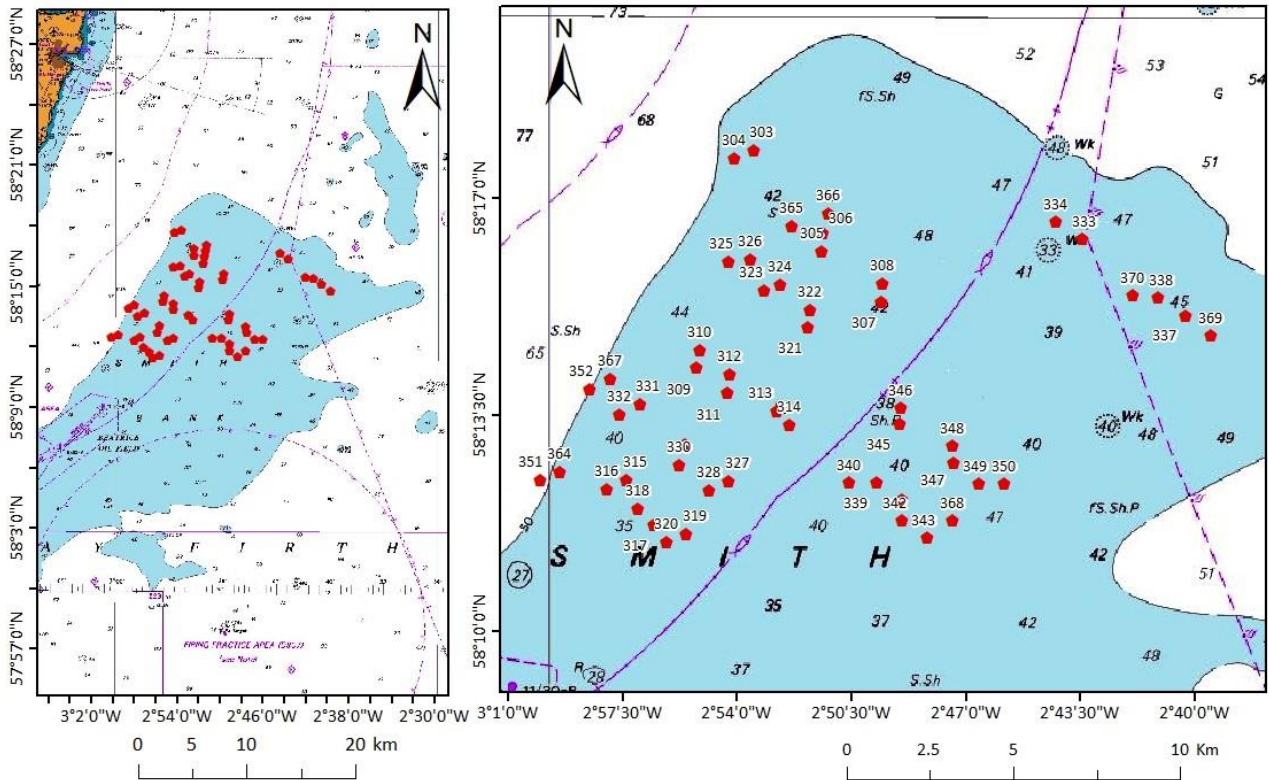


Figure 1 Mooring locations noted in this Notice to Mariners – Smith Bank and adjacent waters (red dots)

Table 1 Completed mooring and equipment installation

Name	Coordinates as laid (WGS84 datum)		Characteristics	Windfarm site	Deployment date
303	58° 17.787' N	2° 53.471' W	Subsurface	Beatrice	29/07/2022
304	58° 17.663' N	2° 54.09' W	Subsurface	Beatrice	29/07/2022
305	58° 16.15' N	2° 51.394' W	Subsurface	Beatrice	29/07/2022
306	58° 16.445' N	2° 51.342' W	Subsurface	Beatrice	29/07/2022
307	58° 15.337' N	2° 49.564' W	Subsurface	Beatrice	29/07/2022
308	58° 15.632' N	2° 49.511' W	Subsurface	Beatrice	29/07/2022
309	58° 14.267' N	2° 55.238' W	Subsurface	Beatrice	28/07/2022
310	58° 14.56' N	2° 55.138' W	Subsurface	Beatrice	28/07/2022
311	58° 13.856' N	2° 54.302' W	Subsurface	Beatrice	28/07/2022
312	58° 14.153' N	2° 54.223' W	Subsurface	Beatrice	28/07/2022
313	58° 13.559' N	2° 52.797' W	Subsurface	Beatrice	28/07/2022
314	58° 13.341' N	2° 52.39' W	Subsurface	Beatrice	28/07/2022
315	58° 12.452' N	2° 57.404' W	Subsurface	Beatrice	28/07/2022
316	58° 12.308' N	2° 57.984' W	Subsurface	Beatrice	28/07/2022
317	58° 11.732' N	2° 56.565' W	Subsurface	Beatrice	28/07/2022
318	58° 11.989' N	2° 57.039' W	Subsurface	Beatrice	28/07/2022
319	58° 11.577' N	2° 55.562' W	Subsurface	Beatrice	28/07/2022
320	58° 11.453' N	2° 56.181' W	Subsurface	Beatrice	28/07/2022
321	58° 14.926' N	2° 51.81' W	Subsurface	Beatrice	29/07/2022
322	58° 15.202' N	2° 51.76' W	Subsurface	Beatrice	29/07/2022
323	58° 15.515' N	2° 53.161' W	Subsurface	Beatrice	29/07/2022

Name	Coordinates as laid (WGS84 datum)		Characteristics	Windfarm site	Deployment date
324	58° 15.609' N	2° 52.68' W	Subsurface	Beatrice	29/07/2022
325	58° 15.985' N	2° 54.252' W	Subsurface	Beatrice	29/07/2022
326	58° 16.015' N	2° 53.593' W	Subsurface	Beatrice	29/07/2022
327	58° 12.424' N	2° 54.26' W	Subsurface	Beatrice	28/07/2022
328	58° 12.282' N	2° 54.846' W	Subsurface	Beatrice	28/07/2022
329	58° 13.031' N	2° 55.596' W	Subsurface	Beatrice	28/07/2022
330	58° 12.695' N	2° 55.764' W	Subsurface	Beatrice	28/07/2022
331	58° 13.68' N	2° 56.958' W	Subsurface	Beatrice	28/07/2022
332	58° 13.507' N	2° 57.595' W	Subsurface	Beatrice	28/07/2022
351	58° 12.454' N	3° 0.051' W	Subsurface	Beatrice	28/07/2022
352	58° 13.915' N	2° 58.513' W	Subsurface	Beatrice	28/07/2022
353	58° 16.851' N	2° 52.257' W	Subsurface	Beatrice	29/07/2022
354	58° 17.066' N	2° 51.132' W	Subsurface	Beatrice	29/07/2022
364	58° 12.579' N	2° 59.437' W	Subsurface	Beatrice	28/07/2022
365	58° 16.557' N	2° 52.309' W	Subsurface	Beatrice	29/07/2022
366	58° 16.769' N	2° 51.184' W	Subsurface	Beatrice	29/07/2022
367	58° 14.082' N	2° 57.907' W	Subsurface	Beatrice	28/07/2022
333	58° 16.338' N	2° 43.386' W	Subsurface	Moray East	27/07/2022
334	58° 16.626' N	2° 44.207' W	Subsurface	Moray East	27/07/2022
337	58° 15.095' N	2° 40.235' W	Subsurface	Moray East	27/07/2022
338	58° 15.384' N	2° 41.054' W	Subsurface	Moray East	27/07/2022
339	58° 12.41' N	2° 49.732' W	Subsurface	Moray East	27/07/2022
340	58° 12.415' N	2° 50.56' W	Subsurface	Moray East	27/07/2022
341	58° 12.132' N	2° 48.963' W	Subsurface	Moray East	27/07/2022
342	58° 11.793' N	2° 48.963' W	Subsurface	Moray East	27/07/2022
343	58° 11.52' N	2° 48.18' W	Subsurface	Moray East	27/07/2022
345	58° 13.347' N	2° 49.014' W	Subsurface	Moray East	27/07/2022
346	58° 13.619' N	2° 48.966' W	Subsurface	Moray East	27/07/2022
347	58° 12.718' N	2° 47.374' W	Subsurface	Moray East	27/07/2022
348	58° 13.001' N	2° 47.394' W	Subsurface	Moray East	27/07/2022
349	58° 12.38' N	2° 46.59' W	Subsurface	Moray East	27/07/2022
350	58° 12.378' N	2° 45.804' W	Subsurface	Moray East	27/07/2022
368	58° 11.785' N	2° 47.397' W	Subsurface	Moray East	27/07/2022
369	58° 14.76' N	2° 39.456' W	Subsurface	Moray East	27/07/2022
370	58° 15.419' N	2° 41.823' W	Subsurface	Moray East	27/07/2022

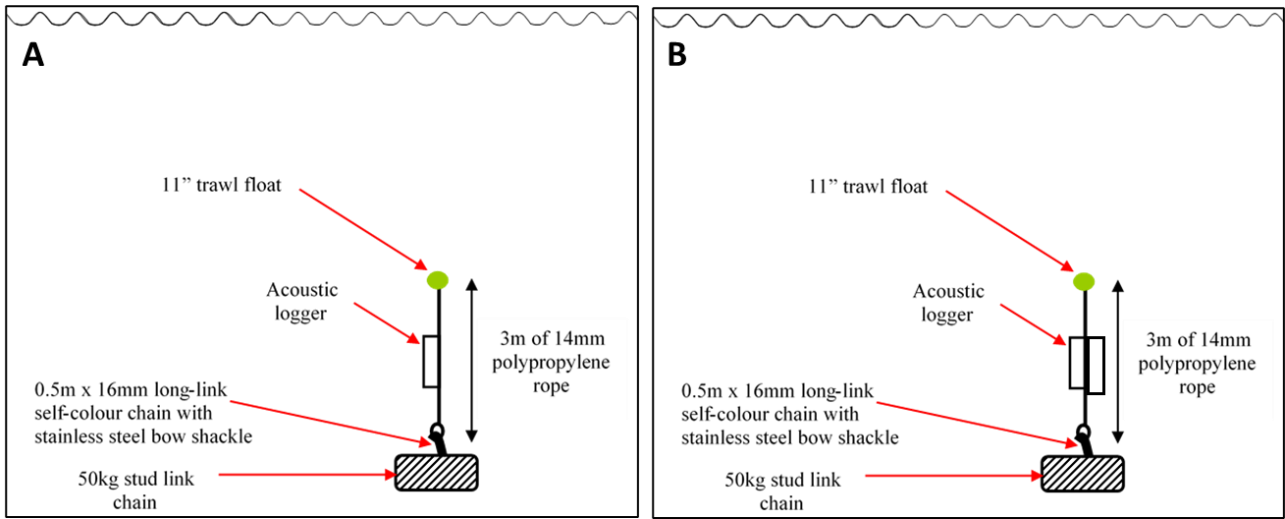


Figure S 1 Schematic of subsurface mooring (A) with one acoustic logger (CPOD) and (B) with two acoustic loggers (1 CPOD & 1 FPOD)



Figure S 2 Examples of equipment which the above moorings support.