

NOTICE TO MARINERS

Issue date: 14/04/2022

In accordance with the Marine Licence for the Telford Offshore Wind Farm (MS-00009426) condition 3.2.3.2: Navigational Safety, the Marine Licence for the Stevenson Offshore Wind Farm (MS-00009425) condition 3.2.3.2: Navigational Safety, and the Marine Licence for the MacColl Offshore Wind Farm (MS-00009424) condition 3.2.3.2: Navigational Safety.

1. Completion of Works

Please be advised that Moray Offshore Windfarm (East) Limited (Moray East) completed the construction works and final commissioning of the works for the Moray East Offshore Wind Farm on 1st April 2022. AIS transmitters using virtual systems are now installed and operational as shown on Figure 2 below. The Aids to Navigation (AtoN) are active and transmit a virtual signal to Moray East OWF - South (ME – A01), Moray East OWF - East (ME - L09) and Moray East OWF - North (ME – H22). Marker buoys remain in place, to be removed in the next weeks and removal will be informed through a separate NtM.

As notified in the Notice to Mariners issued on 11th February 2022 (available from Moray East website www.morayeast.com/current-works/offshore-works), completion of the works associated with the Offshore Transmission Infrastructure (OTI) and Offshore Substation Platforms (OSPs) was achieved on the 13th January 2022, these have now also been fully commissioned.

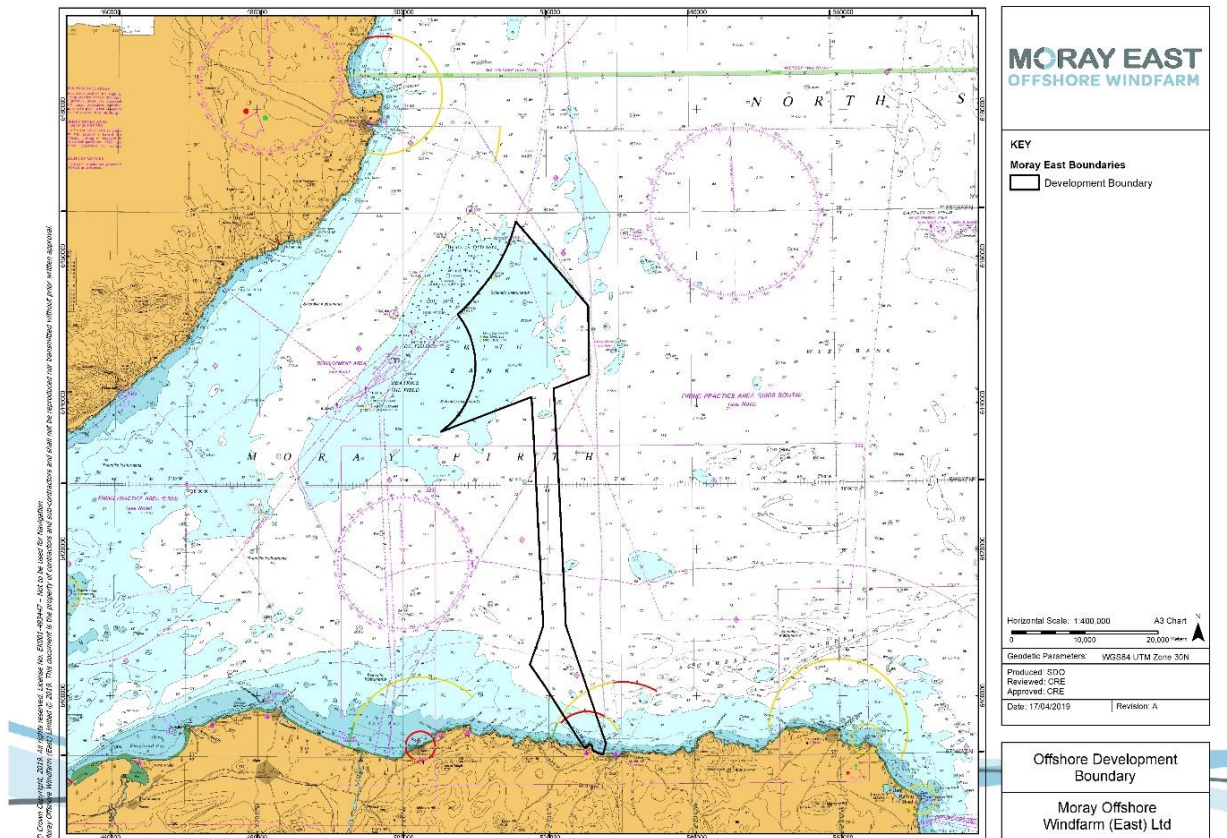


Figure 1 Moray East Offshore Development Boundary

Table 1 Marker buoy locations

Name	WGS84		WGS84 UTM Zone 30N	
	Latitude (dms)	Longitude (dms)	Easting (m)	Northing (m)
Buoy 1 - North Cardinal Buoy , Pillar shaped with a north cardinal shaped top mark, exhibiting a Quick (Q) White (W) light character and AIS.	58° 18' 6.600" N	2° 41' 4.800" W	518481.96	6462358.27
Buoy 2 - Special Mark Buoy , Pillar shaped with a yellow 'x' shaped top mark, exhibiting a Fl Y 5s light character.	58° 16' 48.300" N	2° 37' 55.380" W	521579.08	6459952.33
Buoy 3 - Special Mark Buoy , Pillar shaped with a yellow 'x' shaped top mark, exhibiting a Fl Y 5s light character.	58° 15' 8.460" N	2° 35' 57.300" W	523521.05	6456875.58
Buoy 4 - East Cardinal Buoy , Pillar shaped with an east cardinal shaped top mark, exhibiting a Very (V) Q (3) 5 second (s) W light character	58° 10' 44.10" N	2° 32' 45.85" W	526697.39	6448719.65
Buoy 5 - Special Mark Buoy , Pillar shaped with a yellow 'x' shaped top mark, exhibiting a Fl Y 5s light character.	58° 7' 49.680" N	2° 35' 20.640" W	524201.44	6443309.27
Buoy 6 - Special Mark Buoy , Pillar shaped with a yellow 'x' shaped top mark, exhibiting a Fl Y 5s light character.	58° 6' 43.980" N	2° 38' 19.860" W	521280.40	6441260.65
Buoy 7 - Special Mark Buoy , Pillar shaped with a yellow 'x' shaped top mark, exhibiting a Fl Y 5s light character.	58° 4' 57.240" N	2° 47' 9.360" W	512624.16	6437922.64
Buoy 7 - Special Mark Buoy , Pillar shaped with a yellow 'x' shaped top mark, exhibiting a Fl Y 5s light character.	58° 4' 57.240" N	2° 47' 9.360" W	512624.16	6437922.64
Buoy 8 – South Cardinal , Pillar shaped with a south cardinal shaped top mark, exhibiting a V Q (6) + L Fl 10s W light character and AIS.	58° 4' 1.140" N	2° 52' 6.660" W	507757.35	6436175.21
Buoy 9 - Special Mark Buoy , Pillar shaped with a yellow 'x' shaped top mark, exhibiting a Fl Y 5s light character.	58° 8' 37.080" N	2° 50' 37.080" W	509205.67	6444712.15

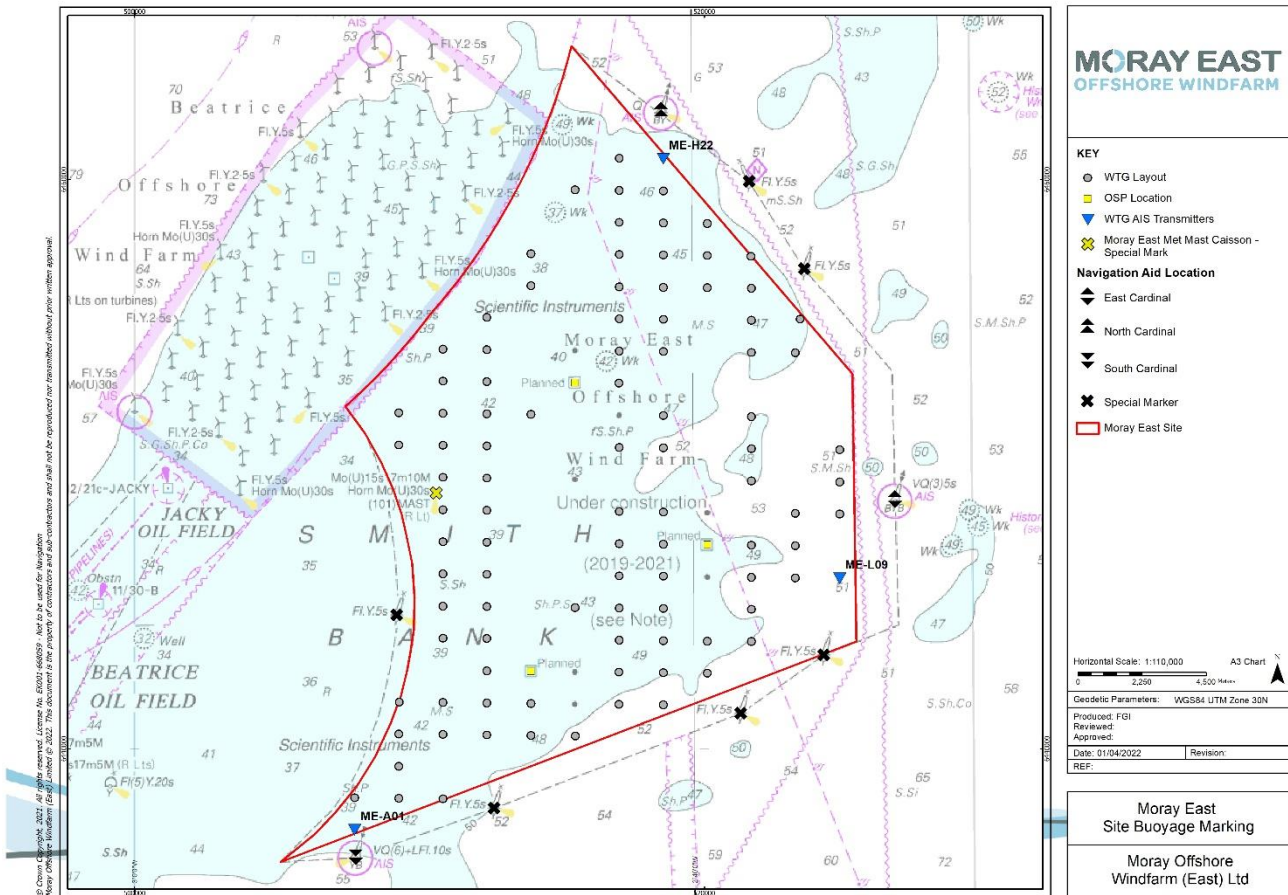


Figure 2 Demarcation of AIS transmitters and marker buoy locations

2. General Safety Advice

Please be aware that while navigating the area to keep an extra look out for the unlit buoy 9 Special mark during the hours of darkness and reduced visibility.

3. Contact details

The following contact can provide more information if required. Please note that specific queries can also be addressed to the relevant vessel or shore based representative.

CONTACT DETAILS	
<p>Marine Coordination Centre 24/7</p> <p>Peter Garden – Lead Marine Coordinator. Email: peter.garden@oceanwinds.com Tel : +44 0788 463 0427</p>	<p>For fisheries related matters</p> <p>Alex Winrow-Giffin – Brown & May Marine Ltd. Email: alex@brownmay.com Tel : +44 1379 872 148 / +44 7760 160 039</p>