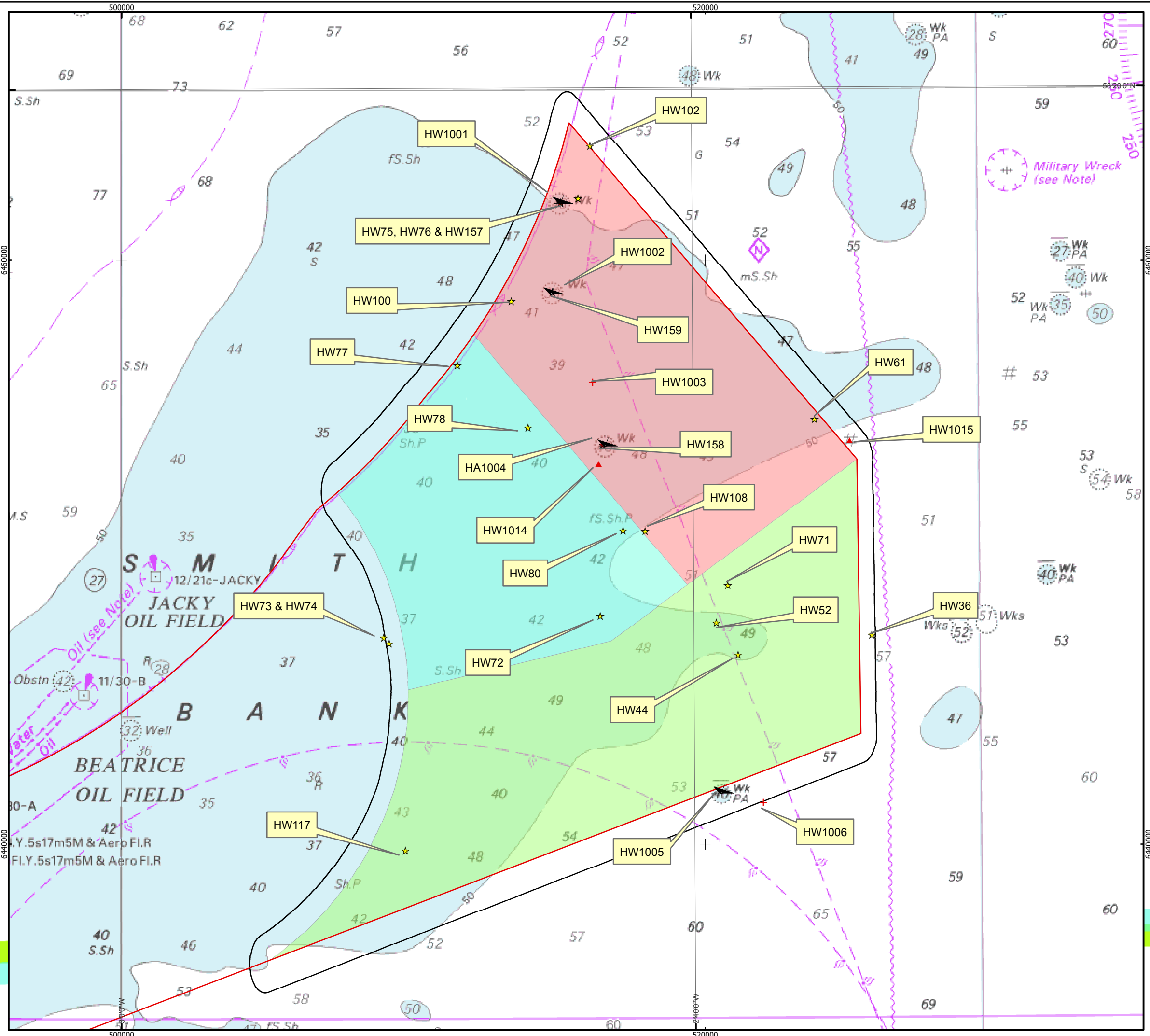


©British Crown Copyright, 2005. All Rights Reserved. SeaZone Solutions Limited, 2005 01/2009.001
Moray Offshore Renewables Ltd © 2011. This document is the property of contractors and sub-contractors and shall not be reproduced nor transmitted without prior written approval.



Moray Offshore Renewables Ltd

Key

- + Dead Wreck
- ▲ Live Wreck
- ▲ Obstruction

Wreck Potential

- ★ High Potential
- ★ Medium Potential

Wreck Potential Legend

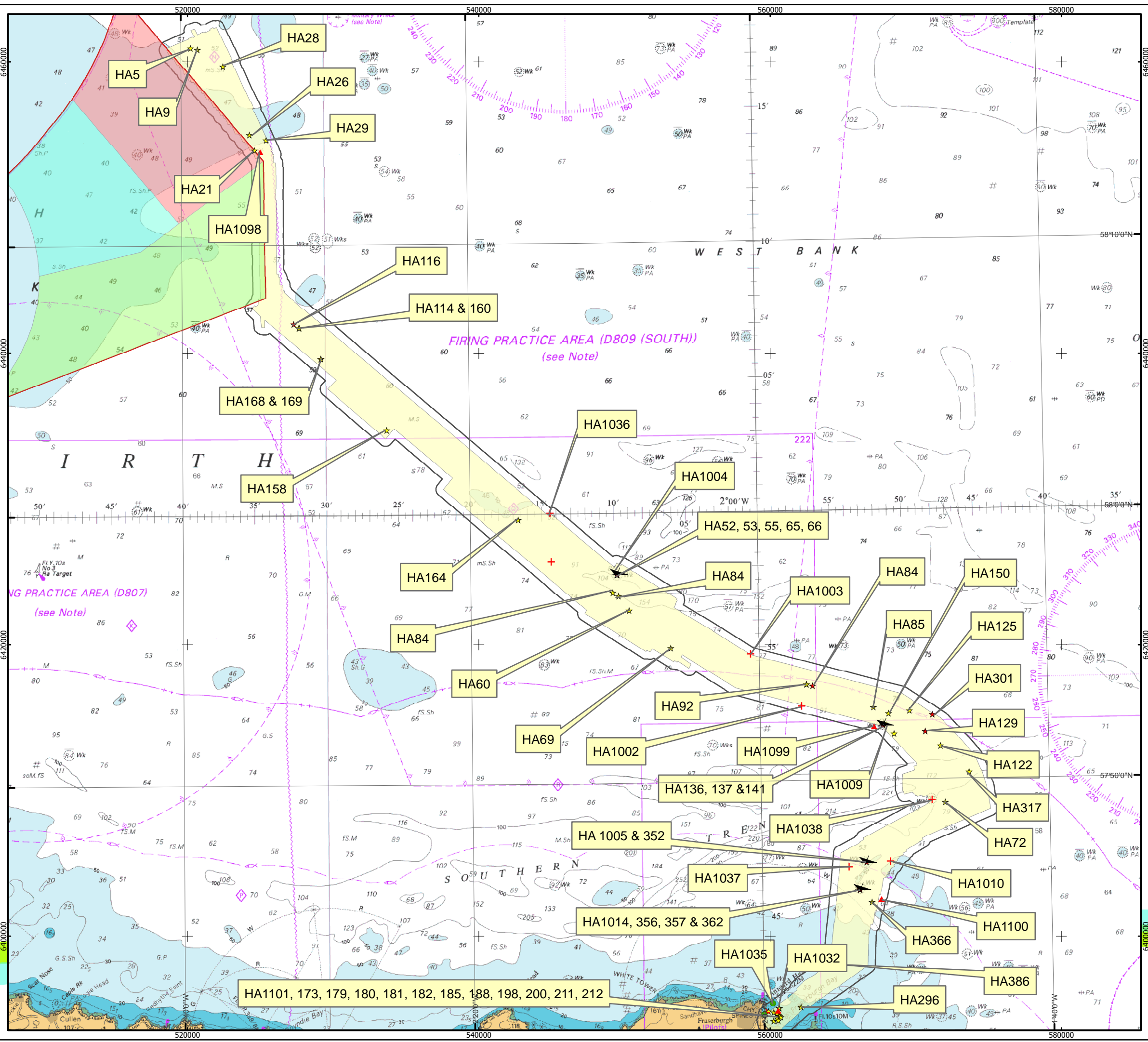
- Red outline: MORL Zone Boundary
- Green fill: MacColl Windfarm
- Cyan fill: Stevenson Windfarm
- Red fill: Telford Windfarm
- Black outline: 1KM Buffer
- Yellow callout: Cultural Heritage Assets

Horizontal Scale: 1:125,000 A3 Chart
 0 2,900 5,800 Meters

Geodetic Parameters: WGS84 UTM Zone 30N
 Produced: AM
 Reviewed: TJ
 Approved: PH
 Date: 17/04/2012 Revision: B
 REF: 8460001-PPW0201-HEA-MAP-001

Figure 5.5-1
Cultural Heritage Assets
 within the three windfarm sites

Moray Offshore Renewables Ltd



KEY

- + Dead Wreck
- Lifted
- ▲ Live Wreck
- ▲ Obstruction

Geophysical Targets

- ★ High
- ★ Medium
- Offshore Export Cable Route
- 1km Buffer
- MacColl Windfarm
- Stevenson Windfarm
- Telford Windfarm
- MORL Zone Boundary

Horizontal Scale: 1:250,000 A3 Chart N

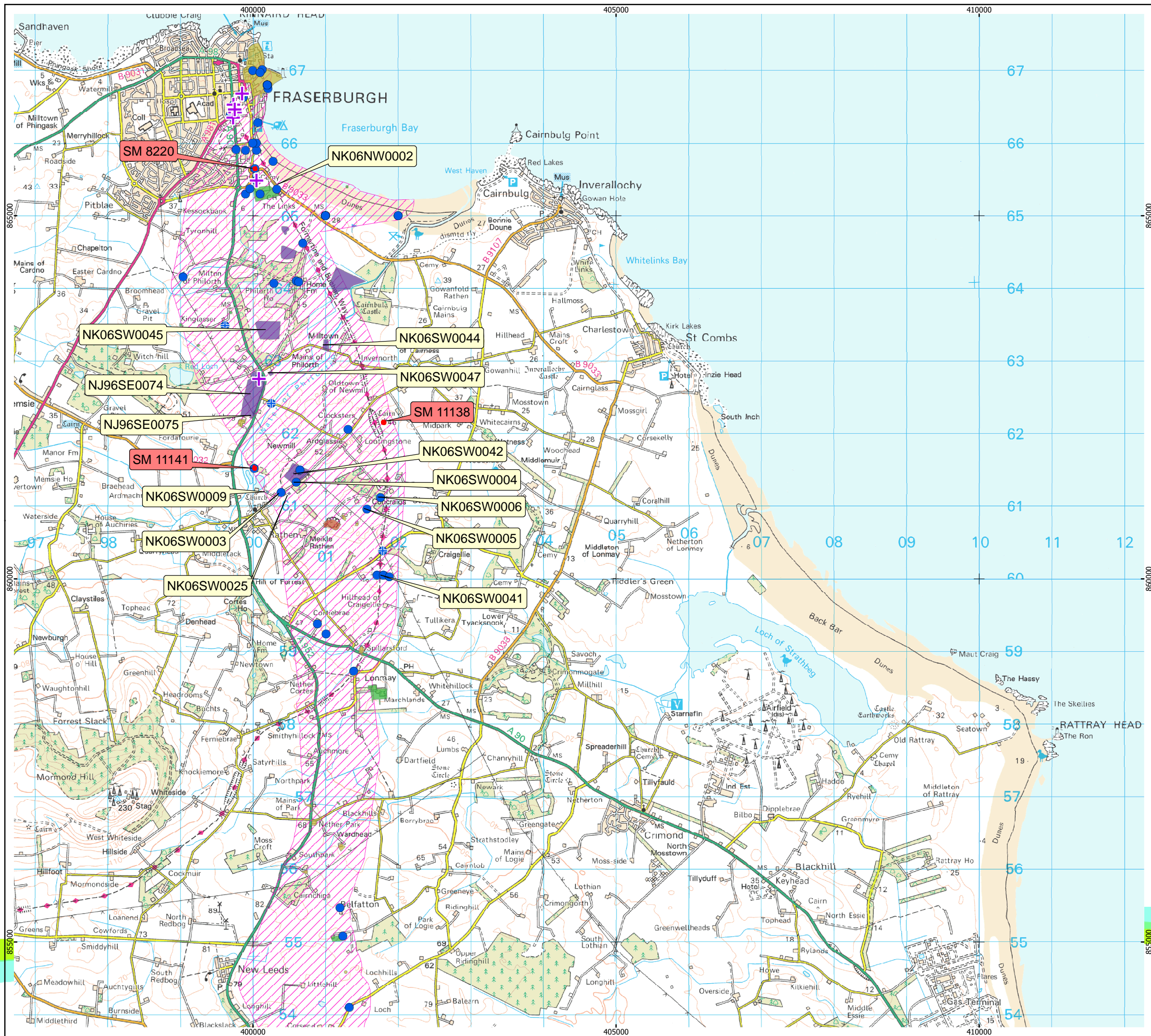
Geodetic Parameters: WGS84 UTM Zone 30N
 Produced: AM
 Reviewed: TJ
 Approved: PH

Date: 17/05/2012 Revision: C
 REF: 8460001-PPW0201-HEA-MAP-002

Fig 5.5-2 Cultural Heritage Assets within Export Cable Route Area

Moray Offshore Renewables Ltd

Reproduced using digital 1:50,000 data supplied by Moray Offshore Renewables Ltd with the permission of the Controller of HMSO. © Crown copyright. Moray Offshore Renewables Ltd © 2011. This document is the property of contractors and sub-contractors and shall not be reproduced nor transmitted without prior written approval.



Moray Offshore Renewables Ltd

KEY

CATEGORY

- + Category B listed building
- + Category C(S) listed building

■ Scheduled Monuments

● NMRS Point

HER record

- Crop Mark
- Documentary Record Only
- Earthwork
- Findspot
- Standing Structure
- ▨ Onshore Export Cable Route

Horizontal Scale: 1:50,000 A3 Chart

Geodetic Parameters: British National Grid

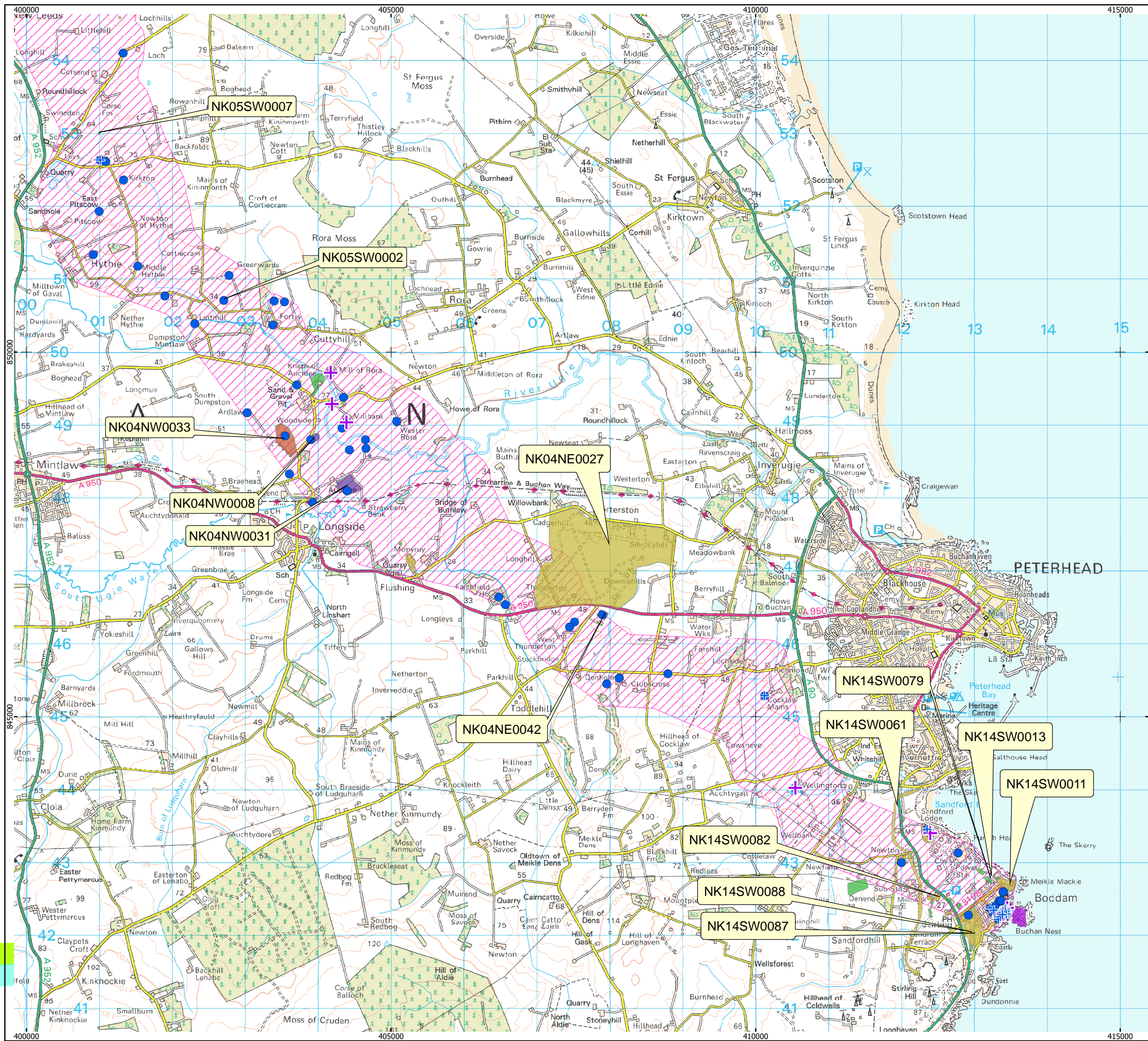
Produced: LB
 Reviewed: RC
 Approved: PH

Date: 19/04/12 Revision: B
 REF: 8460001-PPW0201-HEA-MAP-003

Figure 5.5-3: Cultural Heritage Assets in OnTI Study Area (1 of 2)

Moray Offshore Renewables Ltd

Reproduced using digital 1:50,000 data supplied by Moray Offshore Renewables Ltd with the permission of the Controller of HMSO. © Crown copyright. Moray Offshore Renewables Ltd © 2011. This document is the property of contractors and sub-contractors and shall not be reproduced without prior written approval.



Moray Offshore Renewables Ltd

KEY

Listed Buildings

CATEGORY

- + Category B listed building
- + Category C(S) listed building
- NMRS Point

Boddam Conservation Area

Scheduled Monument

HER_Records

HER record

- Crop Mark
- Documentary Record Only
- Earthwork
- Findspot
- Standing Structure
- Onshore Export Cable Route

Horizontal Scale: 1:50,000 A3 Chart

Geodetic Parameters: British National Grid

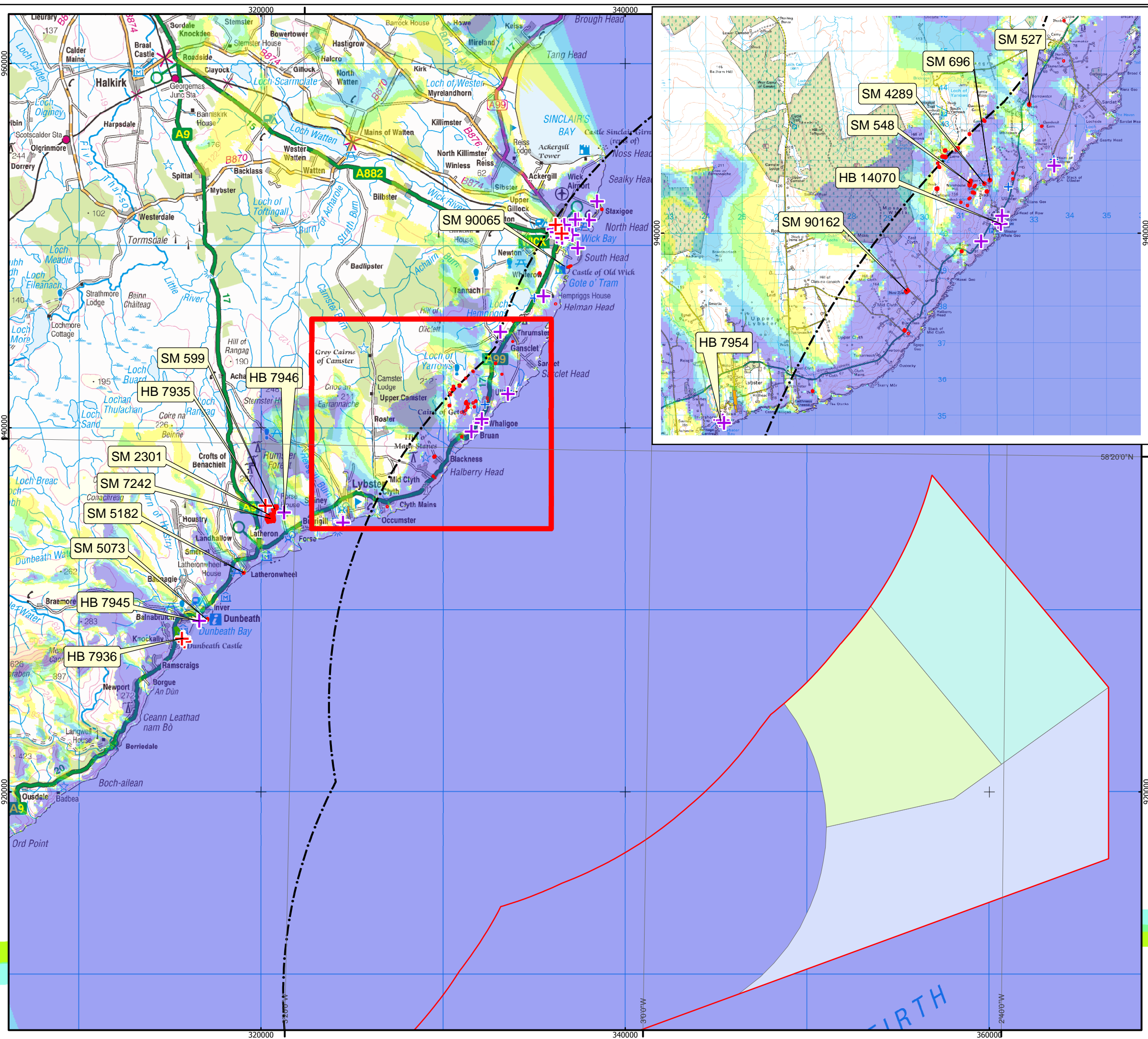
Produced: LB
 Reviewed: RC
 Approved: PH

Date: 19/04/12 Revision: B
 REF: 8460001-PPW0201-HEA-MAP-004

Fig 5.5-4 Cultural Heritage Assets in OnTI Study Area (2 of 2)

Moray Offshore Renewables Ltd

Reproduced using digital 1:50,000 data supplied by Moray Offshore Renewables Ltd with the permission of the Controller of HMSO. © Crown copyright Moray Offshore Renewables Ltd © 2011. This document is the property of contractors and sub-contractors and shall not be reproduced nor transmitted without prior written approval.



Moray Offshore Renewables Ltd

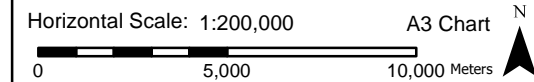
KEY

- MORL Zone Boundary
- Telford Wind Farm
- Stevenson Wind Farm
- MacColl Wind Farm
- 25 km study area
- + Category A-listed building
- + Category B-listed building
- + Category C(S) listed building
- Conservation area
- Scheduled monument
- Dunbeath Castle designed landscape

Scenario 4 Grid Layout Blade Tip ZTV (204m)

No. of Visible Turbines

- 0
- 1 - 50
- 51 - 100
- 101 - 150
- 151 - 200
- 200 - 212



Geodetic Parameters: WGS84 UTM Zone 30N

Produced: LB
Reviewed: RC
Approved: PH

Date: 16/05/2012 Revision: B
REF: 8460001-PPW0201-HEA-MAP-005

Fig 5.5-5 Cultural Heritage Assets Considered in Relation to Impacts upon Setting

Moray Offshore Renewables Ltd