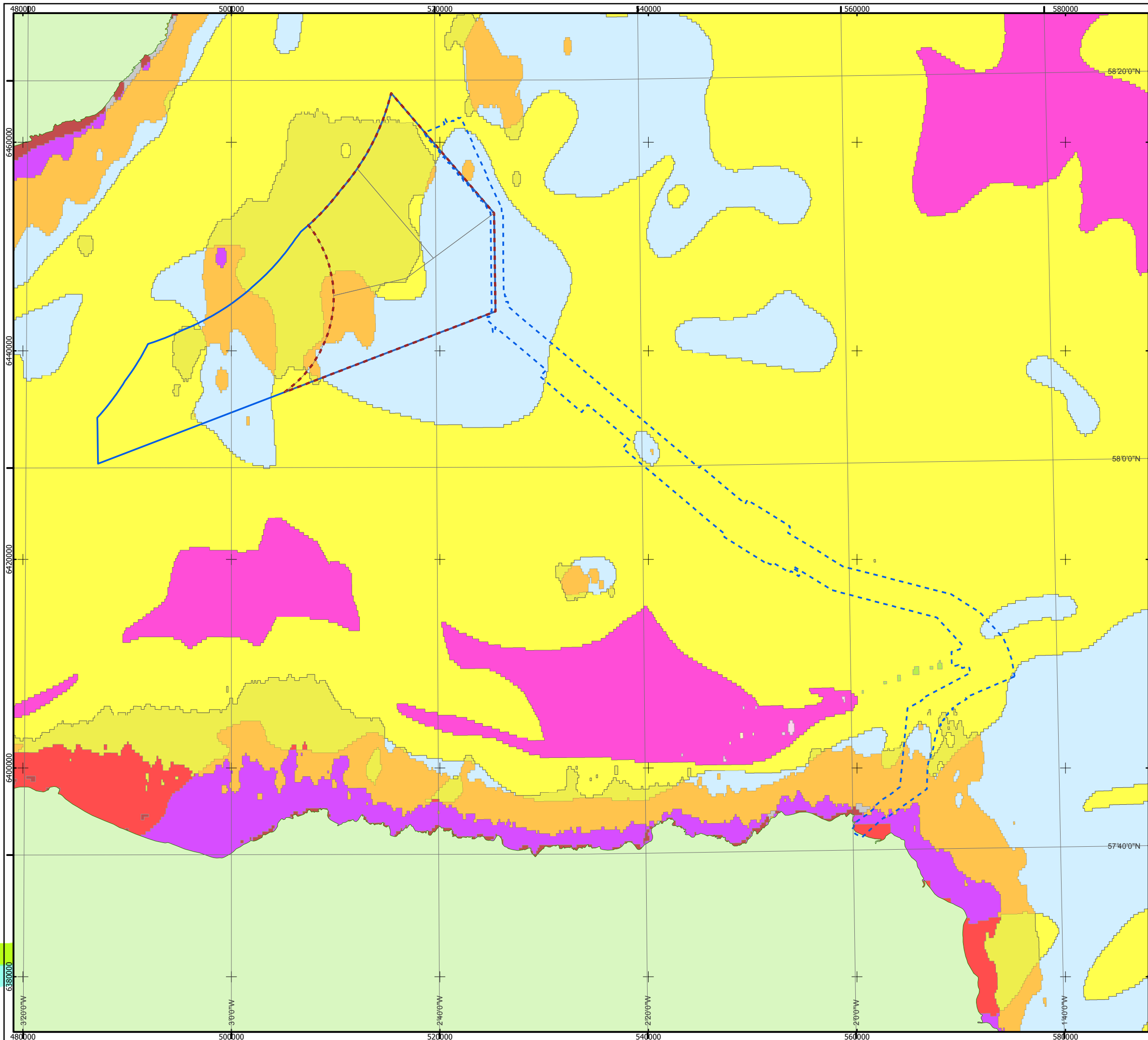


Contains Ordnance Survey data © Crown Copyright & database right 2011.  
 All material variously copyrighted by MESH project partners 2004-2008.  
 © Moray Offshore Renewables Limited [2011]. This document is the property of contractors and sub-contractors and shall not be reproduced nor transmitted without prior written approval.



**Moray Offshore Renewables Ltd**

**KEY**

- Moray Firth R3 Site Boundary
- Eastern Development Area
- Windfarm Boundaries
- Offshore Cable Route

**Predicted EUNIS Habitats (Source: MESH)**

- Circalittoral coarse sediment
- Circalittoral fine sand or circalittoral muddy sand
- Circalittoral mixed sediments
- Circalittoral sandy mud or circalittoral fine mud
- Deep circalittoral coarse sediment
- Deep circalittoral mixed sediments
- Deep circalittoral mud
- Deep circalittoral sand
- Deep-sea mud
- Deep-sea sand or deep-sea muddy sand
- Faunal communities on deep low energy circalittoral rock
- Infralittoral coarse sediment
- Infralittoral fine sand or infralittoral muddy sand
- Infralittoral mixed sediments
- Low energy circalittoral rock
- Low energy infralittoral rock

Horizontal Scale: 1:350,000 A3 Chart  
 0 7,500 15,000 Metres

Geodetic Parameters: WGS84 UTM Zone 30N

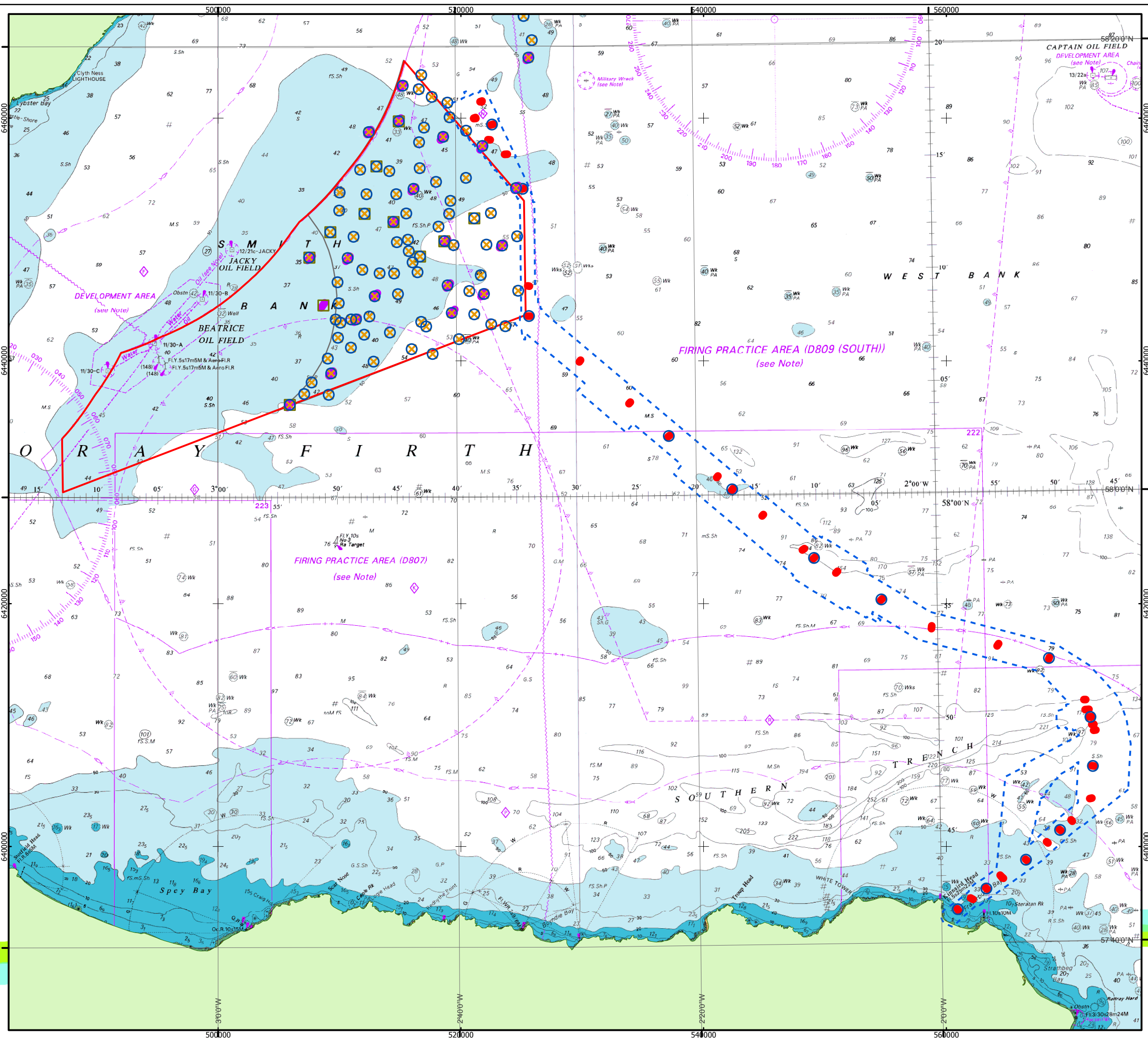
Produced: MXP  
 Reviewed: PAE  
 Approved: PH

Date: 25/04/2012 Revision: D  
 REF: 846001-PPW0201-EMU-MAP-001

**Fig 4.2-1 Moray Firth  
 MESH Habitats**

**Moray Offshore  
 Renewables Ltd**

SeaZone Solutions Limited, 2005 [012009.001]. ©British Crown Copyright, 2005. All Rights Reserved.  
©Moray Offshore Renewables Limited [2011]. This document is the property of contractors and sub-contractors and shall not be reproduced nor transmitted without prior written approval.



**Moray Offshore Renewables Ltd**

**KEY**

- Offshore Export Cable Route
- MORL Zone Boundary
- Eastern Development Area
- Benthic Survey Array**
- X Video Site
- Contaminant Site
- 2m Beam Trawl
- Video Transect

Horizontal Scale: 1:300,000 A3 Chart

Geodetic Parameters: WGS84 UTM Zone 30N

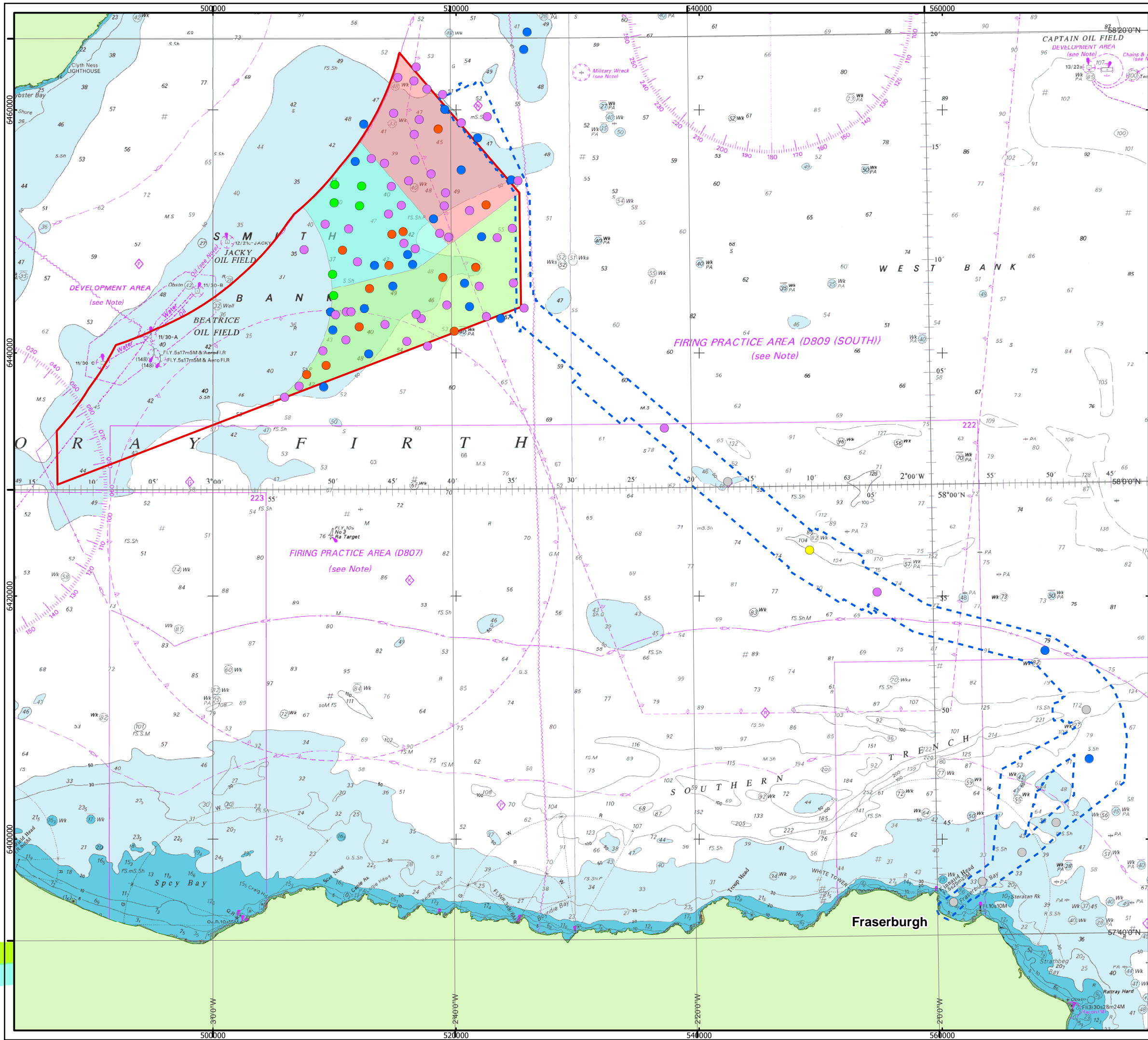
Produced: MXP  
 Reviewed: HXC  
 Approved: PH

Date: 05/05/2012 Revision: D  
 REF: 8460001-PPW0040-EMU-MAP-004

**Fig 4.2-2 Survey Sample Locations**

Moray Offshore Renewables Ltd

SeaZone Solutions Limited, 2005 [012009.001]. © British Crown Copyright, 2005. All Rights Reserved  
 © Moray Offshore Renewables Ltd [2011]. This document is the property of contractors and sub-contractors and shall not be reproduced nor transmitted without prior written approval.



**Moray Offshore Renewables Ltd**

**KEY**

- - - Offshore Export Cable Route
- MORL Zone Boundary
- Telford Windfarm
- Stevenson Windfarm
- MacColl Windfarm

**Folk Classification (1954)**

- Gravel
- Gravelly Sand
- Sandy Gravel
- Slightly Gravelly Muddy Sand
- Slightly Gravelly Sand
- No Sample Collected - Hard/Coarse Substrate

Horizontal Scale: 1:300,000 A3 Chart

Geodetic Parameters: WGS84 UTM Zone 30N

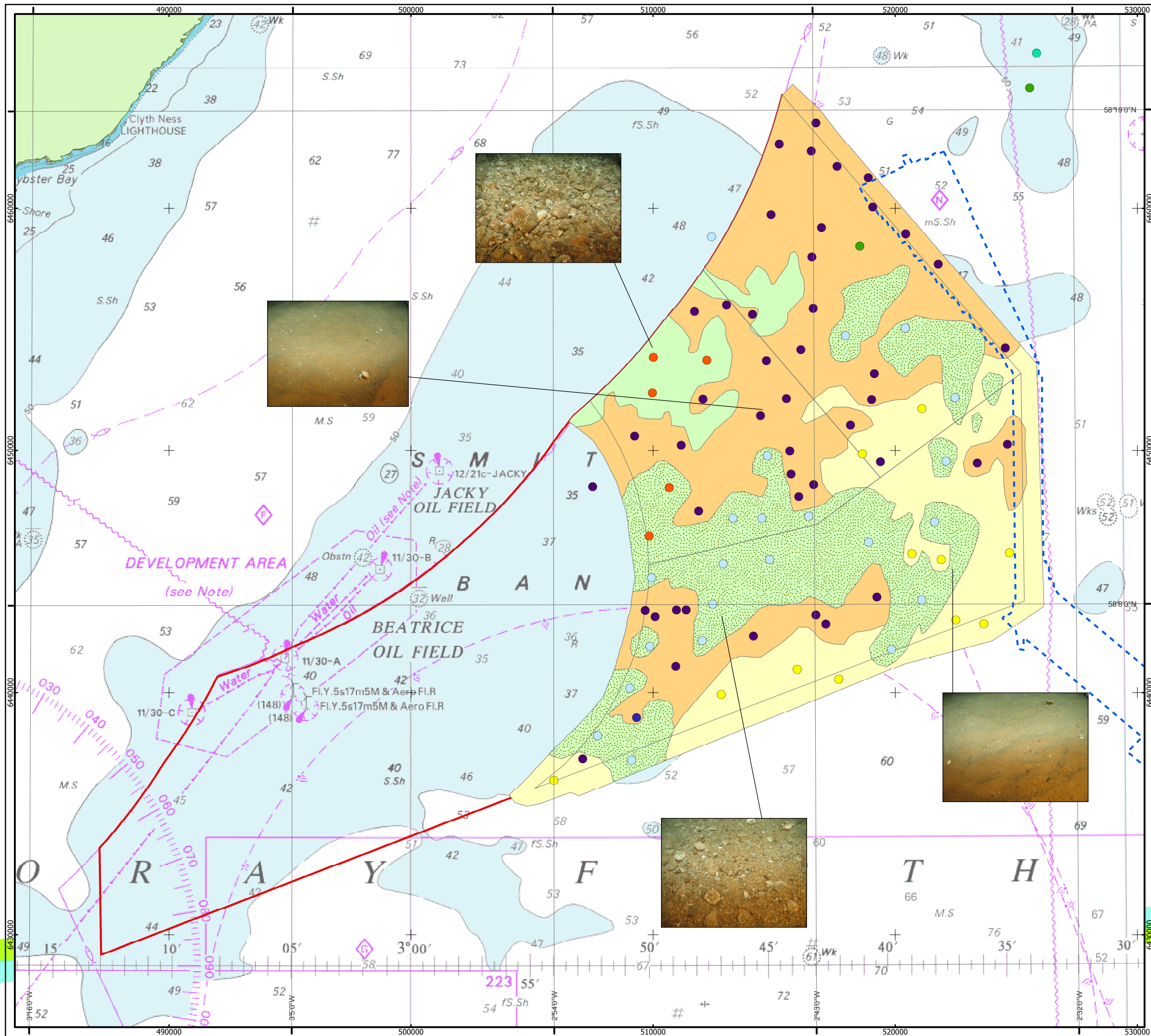
Produced: MXP  
 Reviewed: HXC  
 Approved: PH

Date: 15/05/2011 Revision: D  
 REF: 84001-PPW0201-EMU-MAP-003

**Fig 4.2-3 Windfarm & Export Cable Sediment Classification**

Moray Offshore Renewables Ltd

SeaZone Solutions Limited, 2005 [012009.001]. ©British Crown Copyright, 2005. All Rights Reserved. © Moray Offshore Renewables Limited [2011]. This document is the property of contractors and sub-contractors and shall not be reproduced nor transmitted without prior written approval.



**Moray Offshore Renewables Ltd**

**KEY**

- MORL Zone Boundary
- OFTO Export Cable Route
- Biotopes**
- SS.SCS.CCS
- SS.SCS.CCS.MedLumVen
- SS.SCS.ICS.Glap
- SS.SCS.ICS.MoeVen
- SS.SMx.OMx.PoVen
- SS.SSa.CFiSa.EpusOborApri
- SS.SSa.OSa.OfusAfil or SS.SSa.IMuSa.FfabMag
- Biotope Habitats**
- SS.SCS.CCS
- SS.SCS.CCS.MedLumVen
- SS.SCS.ICS.MoeVen
- SS.SCS.ICS.MoeVen (Glycera dominated)
- SS.SSa.CFiSa.EpusOborApri
- SS.SSa.OSa.OfusAfil or SS.SSa.IMuSa.FfabMag

Horizontal Scale: 1:150,000 A3 Chart

Geodetic Parameters: WGS84 UTM Zone 30N

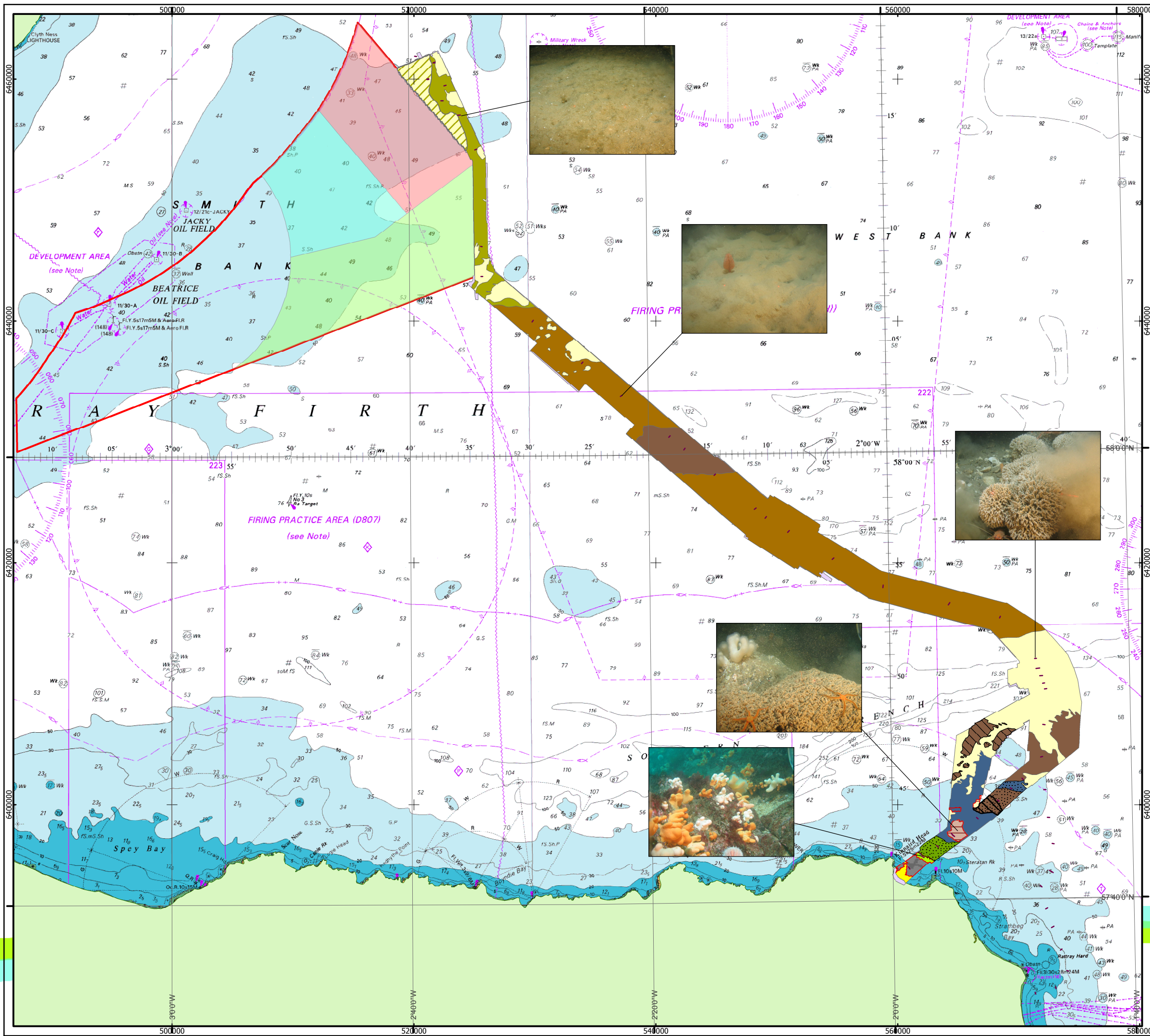
Produced: MXP  
 Reviewed: HXC  
 Approved: PH

Date: 15/05/2012 Revision: C  
 REF: 8460001-PPW0201-EMU-MAP-005

**Fig 4.2-4**  
**Subtidal Biotopes**

**Moray Offshore**  
**Renewables Ltd**

© COPYRIGHT STATEMENT  
 SeaZone Solutions Limited, 2005 [01/2009.001], © British Crown Copyright, 2005. All Rights Reserved.  
 © Moray Offshore Renewables Limited [2011]. This document is the property of contractors and sub-contractors and shall not be reproduced nor transmitted without prior written approval.



Moray Offshore Renewables Ltd

**KEY**

- MORL Zone Boundary
- Potential Reef Extents**
- High Potential Sabellaria Reef
- High Potential Stony Reef
- Low Potential Stony Reef/  
Low Potential Sabellaria Reef
- Low Potential Sabellaria Reef
- Low Potential Stony Reef
- Biotope**
- CR.MCR.CSAb.Sspi
- CR.MCR.EcCr.FaICr
- CR.MCR.EcCr.FaICr.Bri
- IR.MIR.KR (.Lhyp?) or (.Lhyp.pk?)
- SS.SCS and SS.SMx.CMx.FluHyd
- SS.SCS.CCS and CR.MCR.CSAb.Sspi
- SS.SCS.CCS and CR.MCR.EcCr.FaICr.Flu
- SS.SMu.CFiMu.SpnMeg
- SS.SMx.CMx
- SS.SMx.CMx and SS.SSa.CMuSa
- SS.SMx.CMx.FluHyd
- SS.SMx.CMx.OphMx
- SS.SSa
- SS.SSa.CMuSa

Horizontal Scale: 1:300,000 A3 Chart

Geodetic Parameters: WGS84 UTM Zone 30N

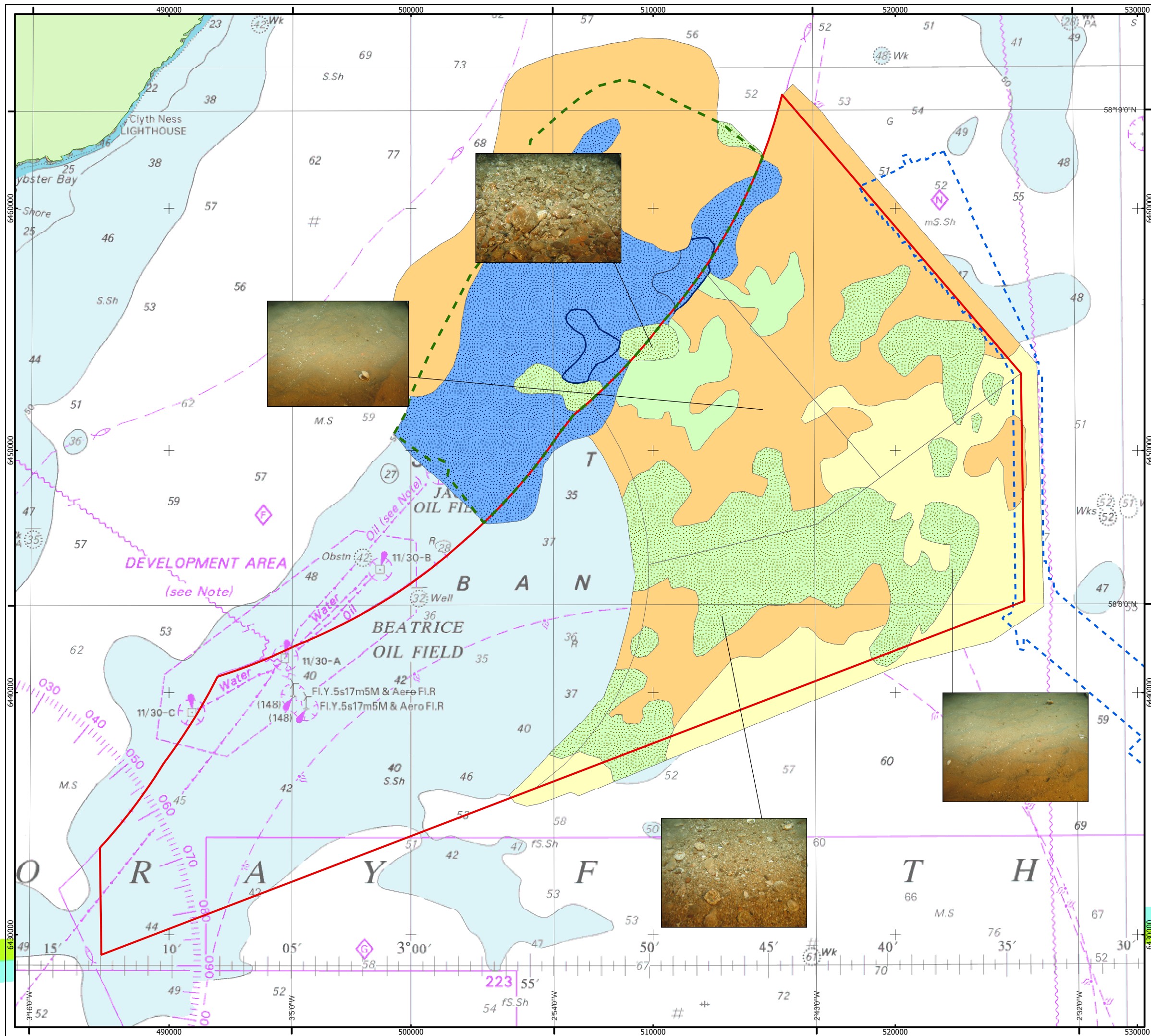
Produced: MXP  
 Reviewed: HXC  
 Approved: PAE

Date: 05/12/2011 Revision: B  
 REF: 8460001-PPW0040-EMU-MAP-004

Fig 4.2-5 Offshore Export  
 Cable Biotope Map

Moray Offshore  
 Renewables Ltd

SeaZone Solutions Limited, 2005 [012009.001]. ©British Crown Copyright, 2005. All Rights Reserved. © Moray Offshore Renewables Limited [2011]. This document is the property of contractors and sub-contractors and shall not be reproduced nor transmitted without prior written approval.



**Moray Offshore Renewables Ltd**

**KEY**

- BOWL Zone Boundary
- MORL Zone Boundary
- Windfarm Boundaries
- Offshore Export Cable Route
  
- Biotope Habitats**
- SS.SCS.CCS
- SS.SCS.CCS.MedLumVen
- SS.SCS.ICS.MoeVen
- SS.SCS.ICS.MoeVen (Glyceria dominated)
- SS.SSa.CFiSa.EpusOborApri
- SS.SSa.OSa.OfusAfil or SS.SSa.IMuSa.FfabMag

Horizontal Scale: 1:150,000 A3 Chart

Geodetic Parameters: WGS84 UTM Zone 30N

Produced: PH  
 Reviewed: HXC  
 Approved: SW

Date: 15/05/2012 Revision: C  
 REF: 8460001-PPW0201-EMU-MAP-005

**Fig 14.1-1 Subtidal Biotopes for MORL and BOWL**

Moray Offshore Renewables Ltd