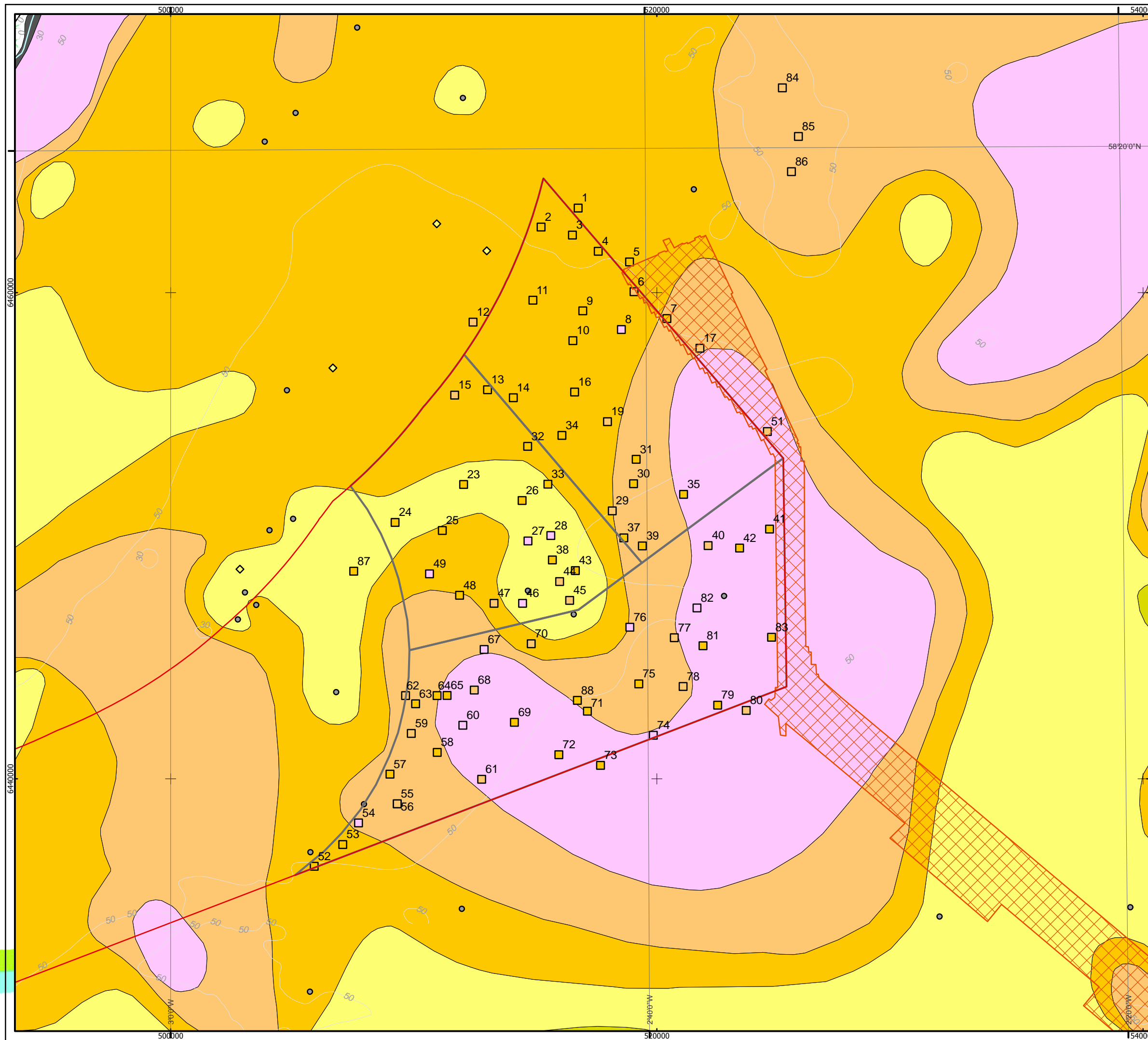


© ABPmer, All rights reserved, 2012. Data: BGS data © Merc. All rights reserved; © British Crown & Seazone Solutions Ltd. All rights reserved. Products Licence No.012009.001
 Moray Offshore Renewables Ltd © 2012. This document is the property of contractors and sub-contractors and shall not be reproduced nor transmitted without prior written approval.



Moray Offshore Renewables Ltd

- KEY**
- MORL Zone Boundary
 - Offshore Export Cable Route
 - Windfarm Boundaries
 - BGS Grab Samples
 - Emu Grab Samples (Folk)**
 - Gravelly Sand
 - Sandy Gravel
 - Slightly Gravelly Sand
 - Partrac Grab Sample (Folk)**
 - Sand
 - Gravelly Sand
 - Muddy Sandy Gravel
 - Muddy Sand
 - Sandy Gravel
 - Slightly Gravelly Sand
 - Sand
 - Rock

Horizontal Scale: 1:150,000 A3 Chart
 0 3,900 7,800 Metres

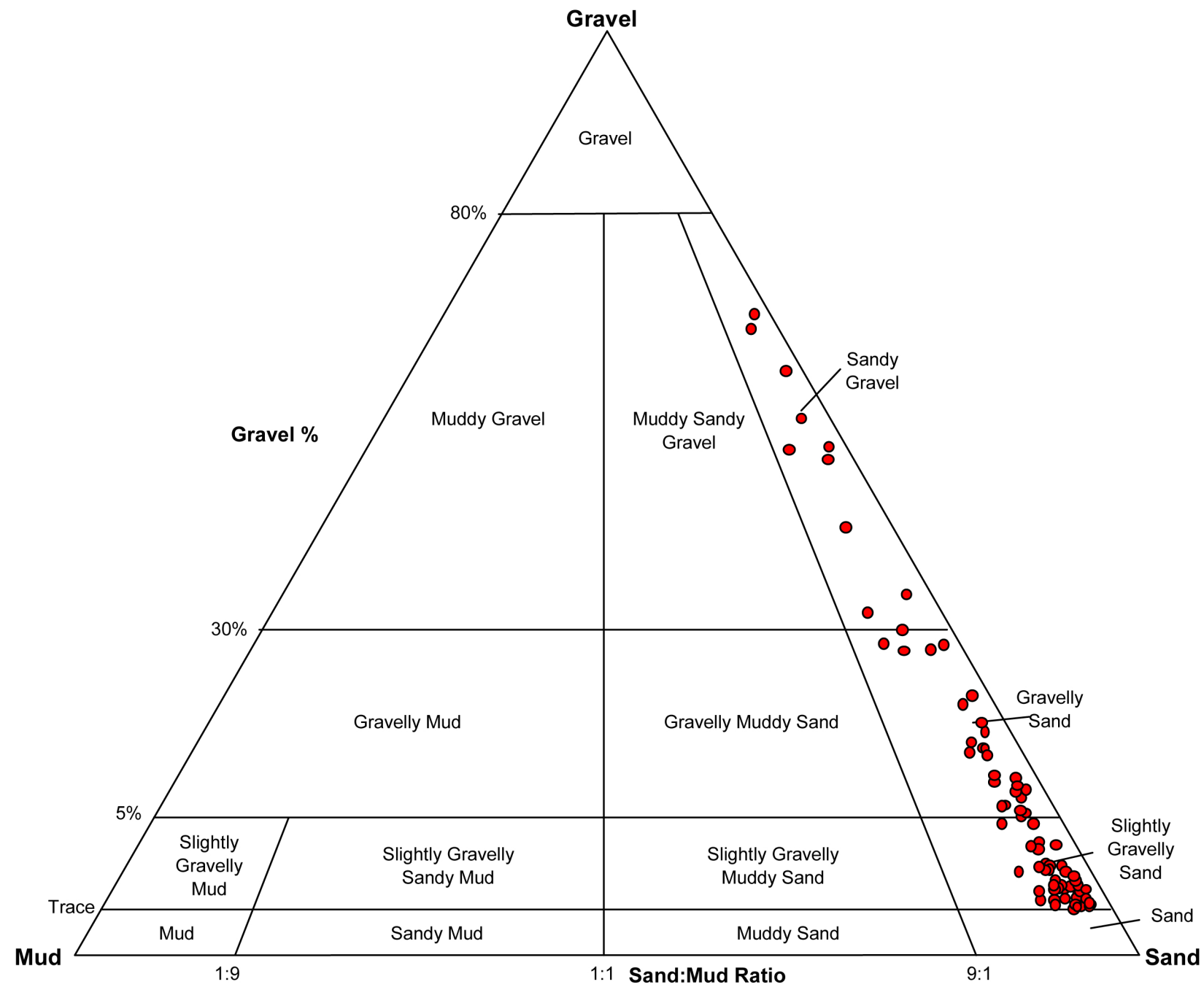
Geodetic Parameters: WGS84 UTM Zone 30N

Produced: MCE
 Reviewed: NMW
 Approved: PH

Date: 04/05/2012 Revision: B
 REF: 8460001-PPW0201-ABP-MAP-025

Fig 3.5-1 - Seabed Sediments within and near the Application Site

Moray Offshore Renewables Ltd



Produced: DOL
Reviewed: CLH
Approved: PH

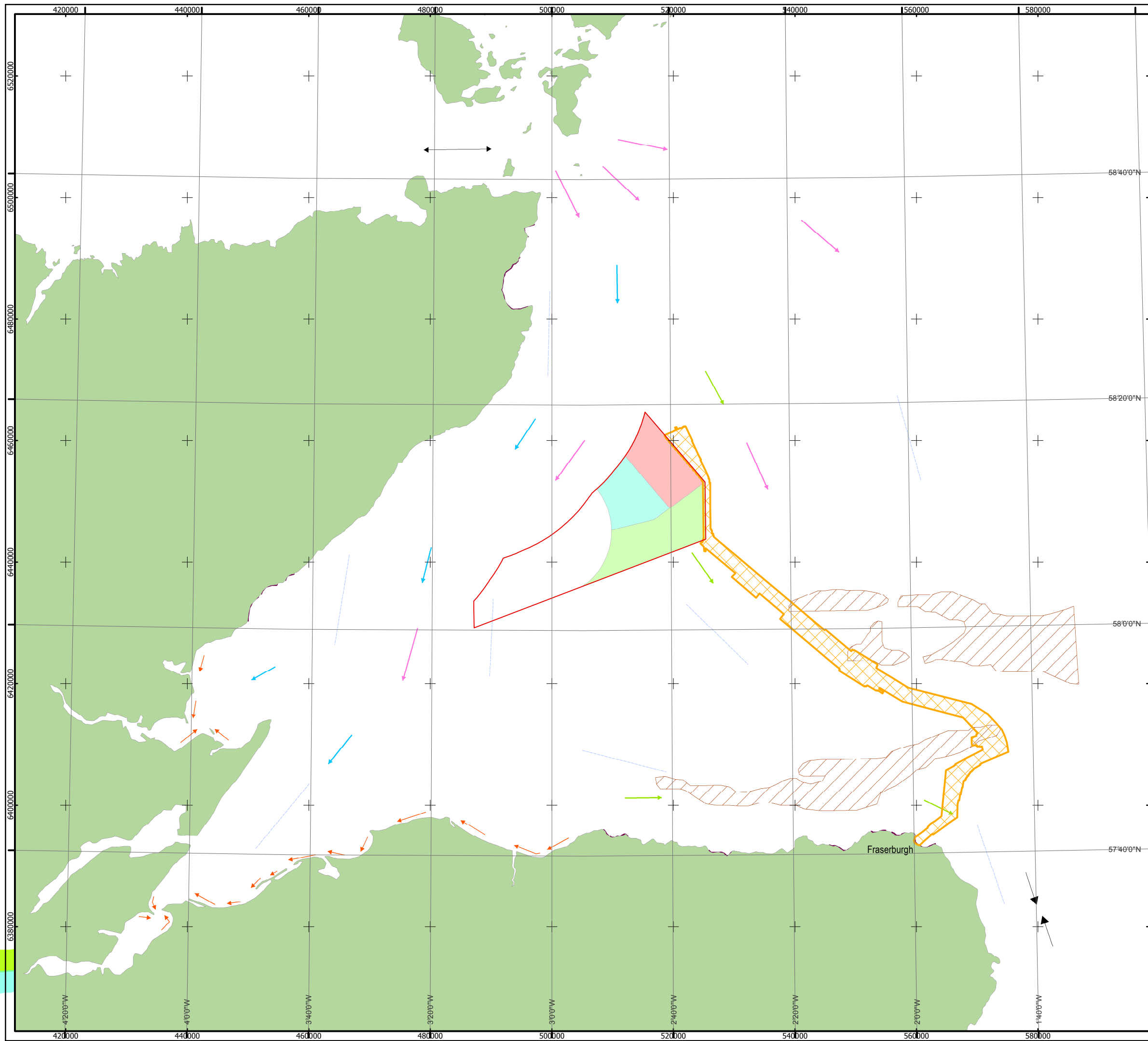
Date: 30/5/12

Revision: A

REF: 8460001-PPW0201-ABP-MAP-028

Fig 3.5-2- MORL EDA
Sediment Samples on the
Folk (1954) Classification

© ABPmer. All rights reserved, 2012. Data source: Reid and McManus (1987); Ramsey and Brampton (2000)
 Moray Offshore Renewables Ltd © 2012. This document is the property of contractors and sub-contractors and shall not be reproduced nor transmitted without prior written approval.



Moray Offshore Renewables Ltd

KEY

- MORL Zone Boundary
- Offshore Export Cable Route
- MacColl Windfarm
- Stevenson Windfarm
- Telford Windfarm
- Offshore Sediment Sink

Sediment Transport

Summary

- Bedload Convergence
- Bedload Parting
- Net Longshore Drift
- Sediment Transport Path
- Sediment Transport Path (probable)
- Semi-independent Beach Unit
- Shelly Carbonate Path
- Tidal Current Ggeneral Orientation

Horizontal Scale: 1:600,000 A3 Chart
 0 15,000 30,000 Metres

Geodetic Parameters: WGS84 UTM Zone 30N

Produced: MCE
 Reviewed: NMW
 Approved: PH

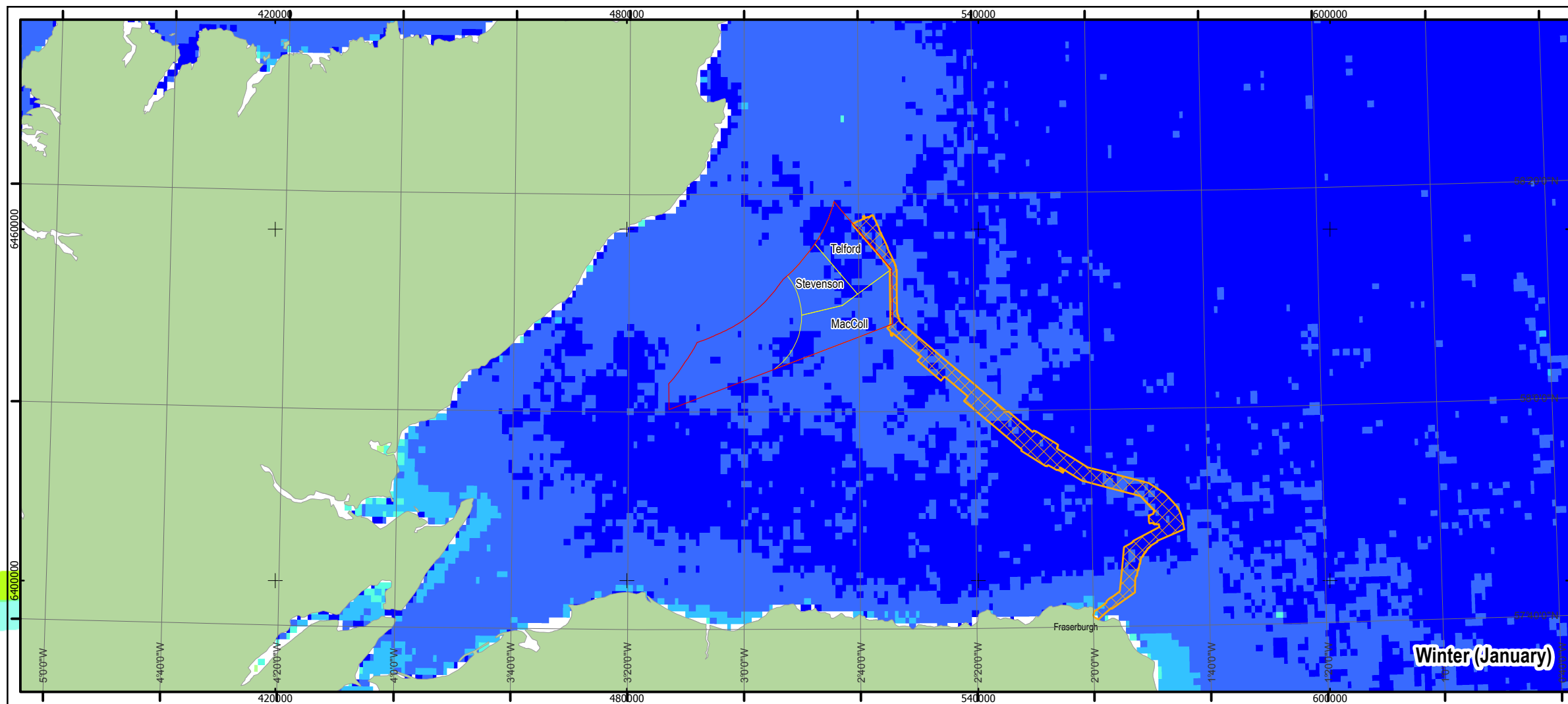
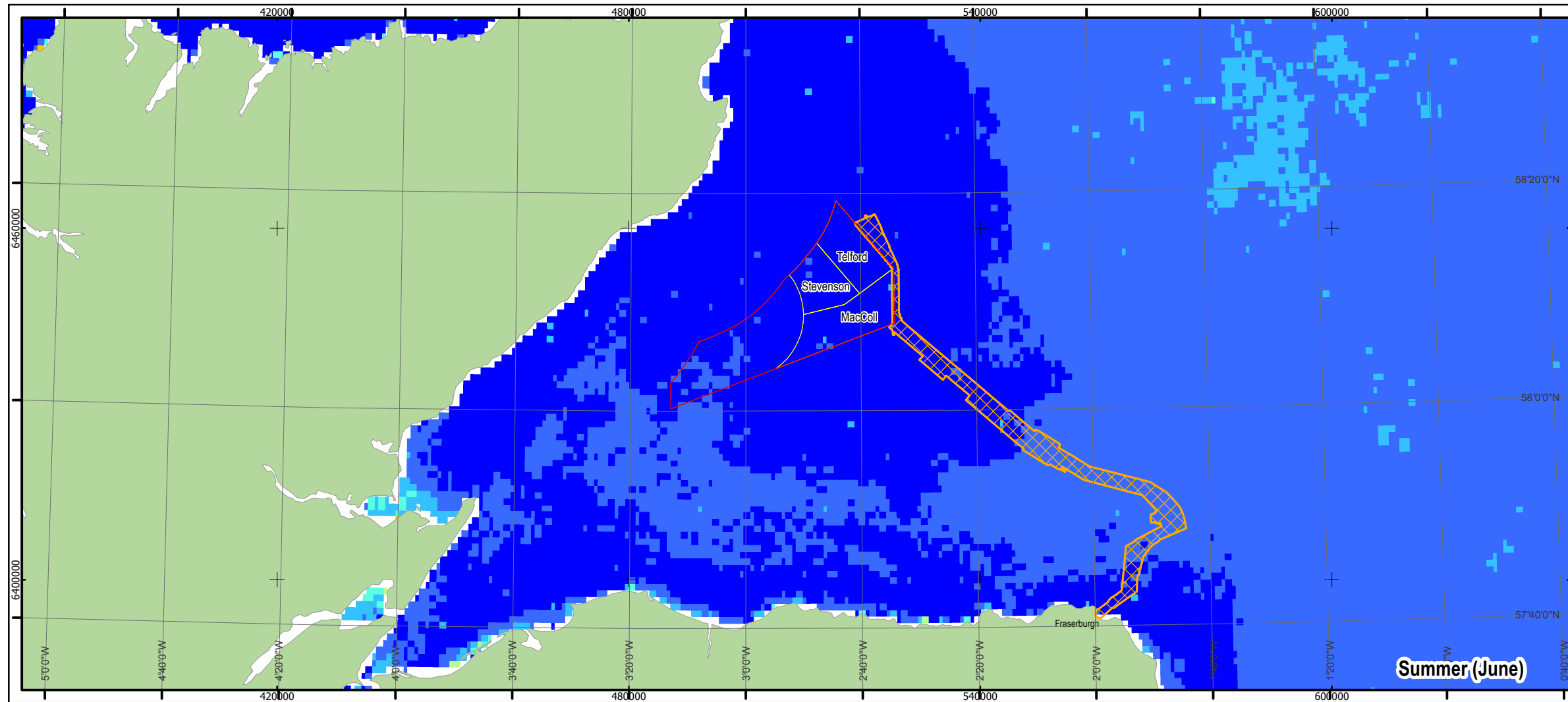
Date: 04/05/2012 Revision: A

REF: 8460001-PPW0201-ABP-MAP-027

Fig 6.2-1 - Bedload and Longshore Sediment Transport in the Moray Firth

Moray Offshore Renewables Ltd

© ABPmer. All rights reserved, 2012. Data source: Dolphin et al., 2011
 Moray Offshore Renewables Ltd © 2012. This document is the property of contractors and sub-contractors and shall not be reproduced nor transmitted without prior written approval.



Moray Offshore Renewables Ltd

KEY

- MORL Zone Boundary
 - Offshore Export Cable Route
 - Windfarm Boundaries
- Mean SPM (mg / l)
- 0.05 - 1
 - 1 - 2
 - 2 - 4
 - 4 - 8
 - 8 - 16
 - 16 - 32
 - 32 - 48
 - 48 - 64
 - 64 - 80

Horizontal Scale: 1:850,000 A3 Chart
 0 22,500 45,000 Metres

Geodetic Parameters: WGS84 UTM Zone 30N

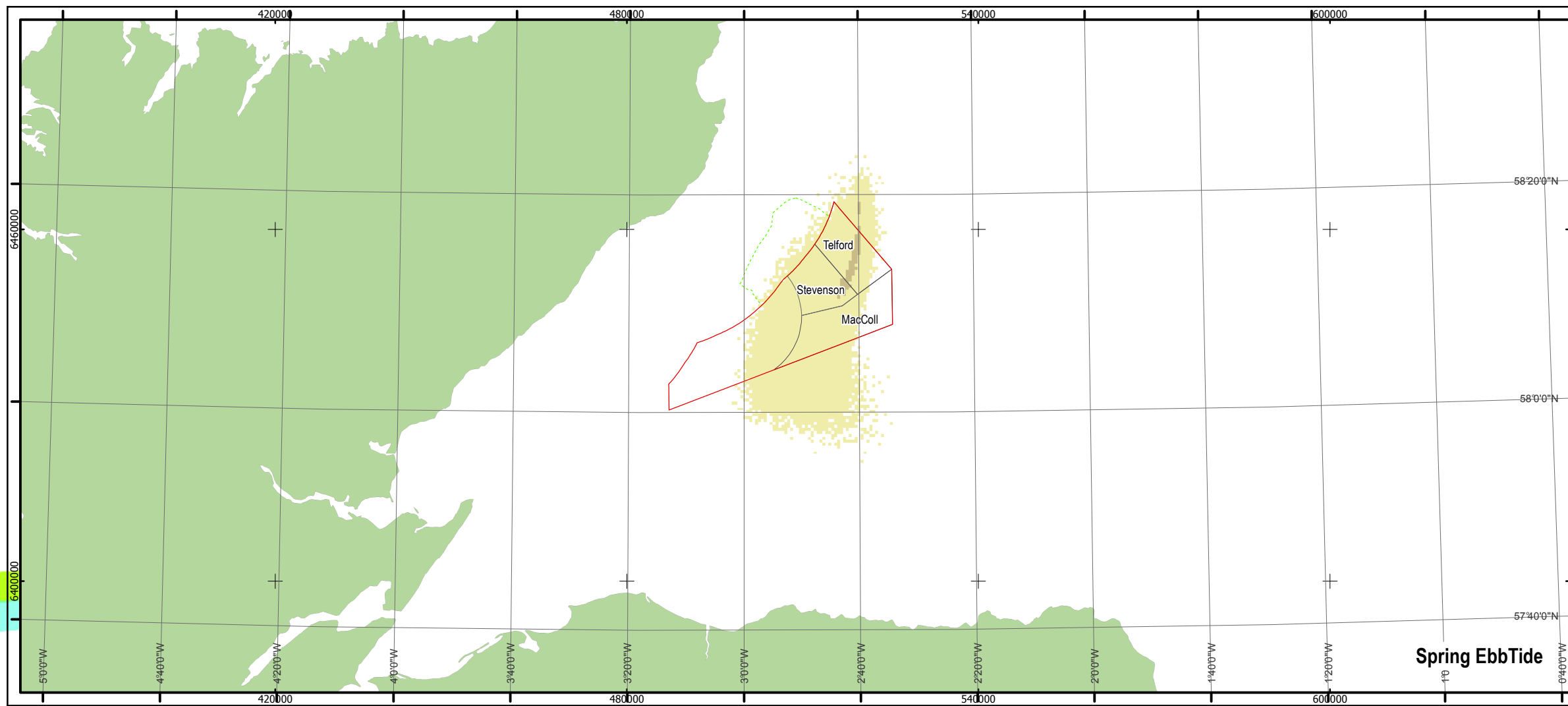
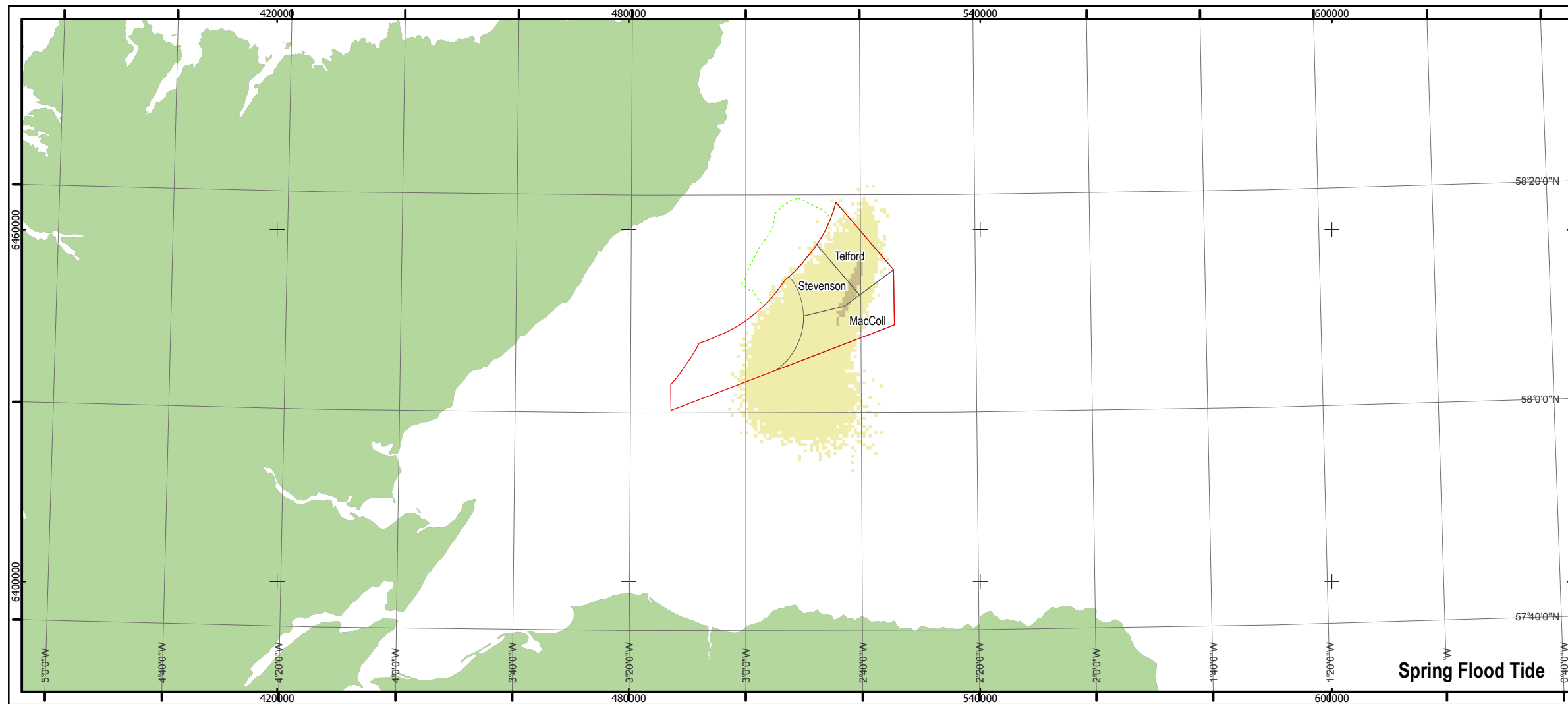
Produced: MCE
 Reviewed: NMW
 Approved: PH

Date: 04/06/2012 Revision: B
 REF: 8460001-PPW0201-ABP-MAP-028

Fig 6.2-2 Suspended Particulate Matter Concentrations

Moray Offshore Renewables Ltd

© ABPmer. All rights reserved, 2012. This document is the property of contractors and sub-contractors and shall not be reproduced nor transmitted without prior written approval.



Moray Offshore Renewables Ltd

KEY

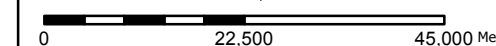
- MORL Zone Boundary
- BOWL Zone Boundary
- Windfarm Boundaries

SSC - mg/L

- < 1
- 1.1 - 2
- 2.1 - 4
- 4.1 - 6
- 6.1 - 8

Horizontal Scale: 1:850,000

A3 Chart



Geodetic Parameters: WGS84 UTM Zone 30N

Produced: MCE
Reviewed: NMW
Approved: PH

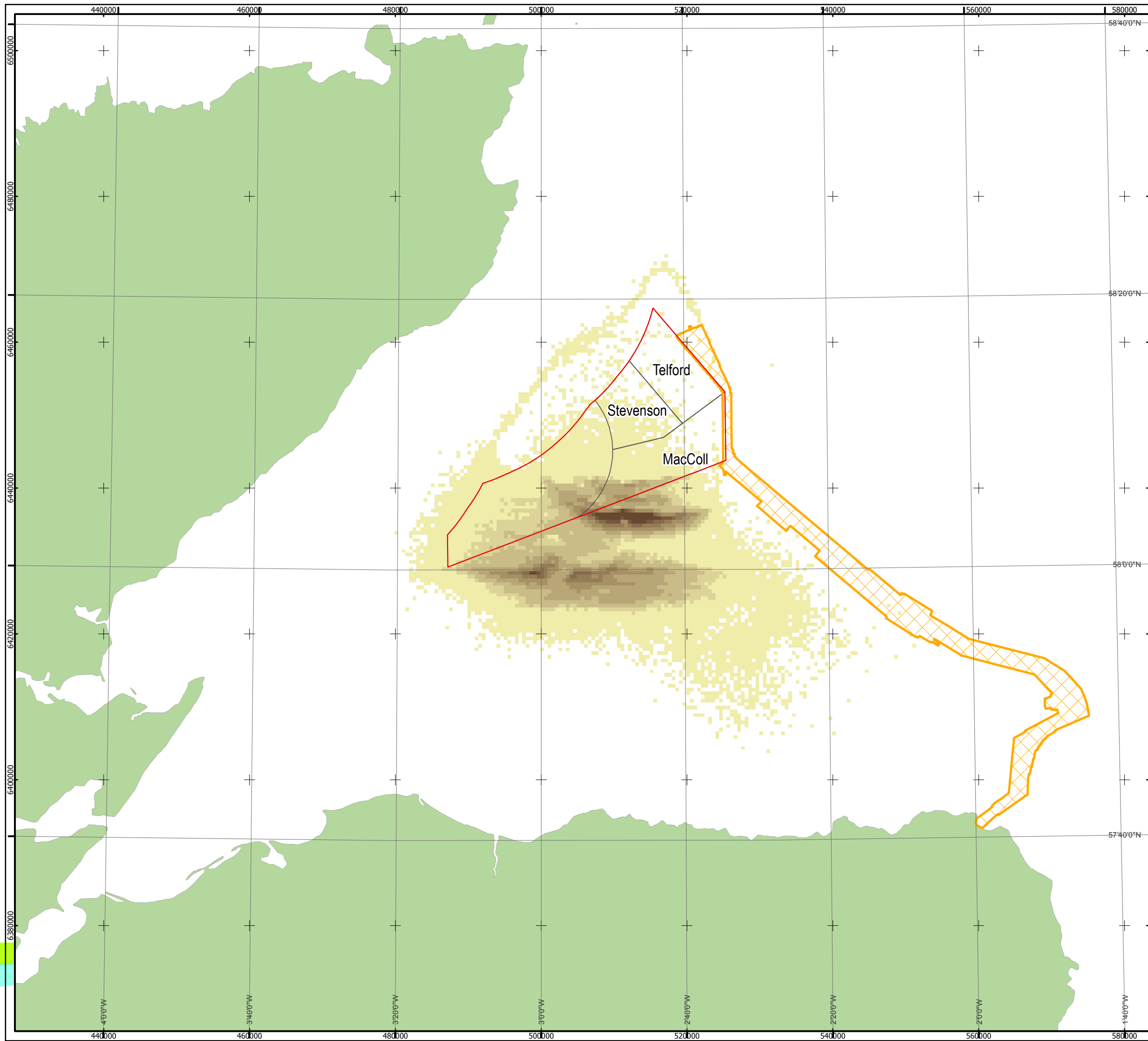
Date: 04/06/2012 Revision: A

REF: 8460001-PPW0201-ABP-MAP-029

Fig 6.2-3 - Typical Sediment Plume Resulting from Dredging Overspill

Moray Offshore Renewables Ltd

© ABRmer. All rights reserved, 2012. This document is the property of contractors and sub-contractors and shall not be reproduced nor transmitted without prior written approval.
Moray Offshore Renewables Ltd © 2012.



Moray Offshore Renewables Ltd

KEY

- MORL Zone Boundary
- Offshore Export Cable Route
- Windfarm Boundaries

Maximum Deposition Thickness (mm)

- < 0.01
- 0.01 - 0.02
- 0.03 - 0.05
- 0.06 - 0.1
- 0.11 - 0.2
- 0.21 - 0.3
- 0.31 - 0.4
- 0.41 - 0.5
- 0.51 - 0.6

Dredging Overspill During Bed Preparation for 339 GBS, Development Scenario 4

Horizontal Scale: 1:500,000 A3 Chart
 N

Geodetic Parameters: WGS84 UTM Zone 30N

Produced: MCE
Reviewed: NMW
Approved: PH

Date: 04/05/2012 Revision: A

REF: 8460001-PPW0201-ABP-MAP-030

Fig 6.2-4 - Maximum Deposition Thickness of Fine Sediments (T3, S5, M5, dredging)

Moray Offshore Renewables Ltd